

WAAS CH 69226 W07A	APP CRS 076°	Rwy Ldg TDZE Apt Elev	8012 729 729
--	------------------------	-----------------------------	---

RNAV (GPS) Z RWY 7R

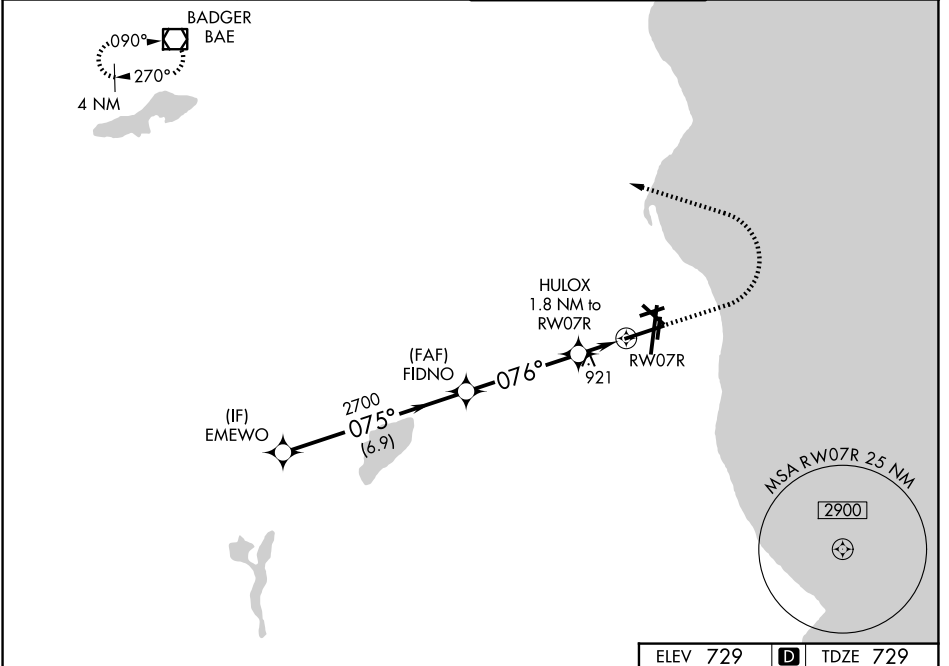
GENERAL MITCHELL INTL (MKE)

▼ For uncompensated Baro-VNAV systems, LNAV/VNAV NA below -20°C (-4°F) or above 54°C (130°F). DME/DME RNP-0.3 NA. # RVR 1800 authorized with use of FD or AP or HUD to DA.

MALSR

MISSED APPROACH: Climb to 2900 then climbing left turn to 3000 direct BAE VOR/DME and hold.

D-ATIS 126.4	MILWAUKEE APP CON 126.5 307.0	MILWAUKEE TOWER 124.575 269.05	GND CON 121.8 263.125
------------------------	---	--	---------------------------------



ELEV 729				D TDZE 729	
VGSi and RNAV glidepath not coincident (VGSi Angle 3.00/TCH 63). *LNAV only.					
CATEGORY	A	B	C	D	
LPV DA #	929/24 200 (200-½)				
LNAV/VNAV DA	1232-1¼ 503 (600-1¼)				
LNAV MDA	1180/24	451 (500-½)	1180/45	451 (500-¾)	
CIRCLING	1240-1	511 (600-1)	1240-1½	1360-2 631 (700-2)	
TDZ/CL Rwy 1L REIL Rwy 1R, 7L, 13, 25R, 25L and 31 HIRL Rwy 1L-19R and 7R-25L MIRL Rwy 1R-19L, 13-31 and 7L-25R					

EC-3, 11 JUN 2026 to 09 JUL 2026

EC-3, 11 JUN 2026 to 09 JUL 2026