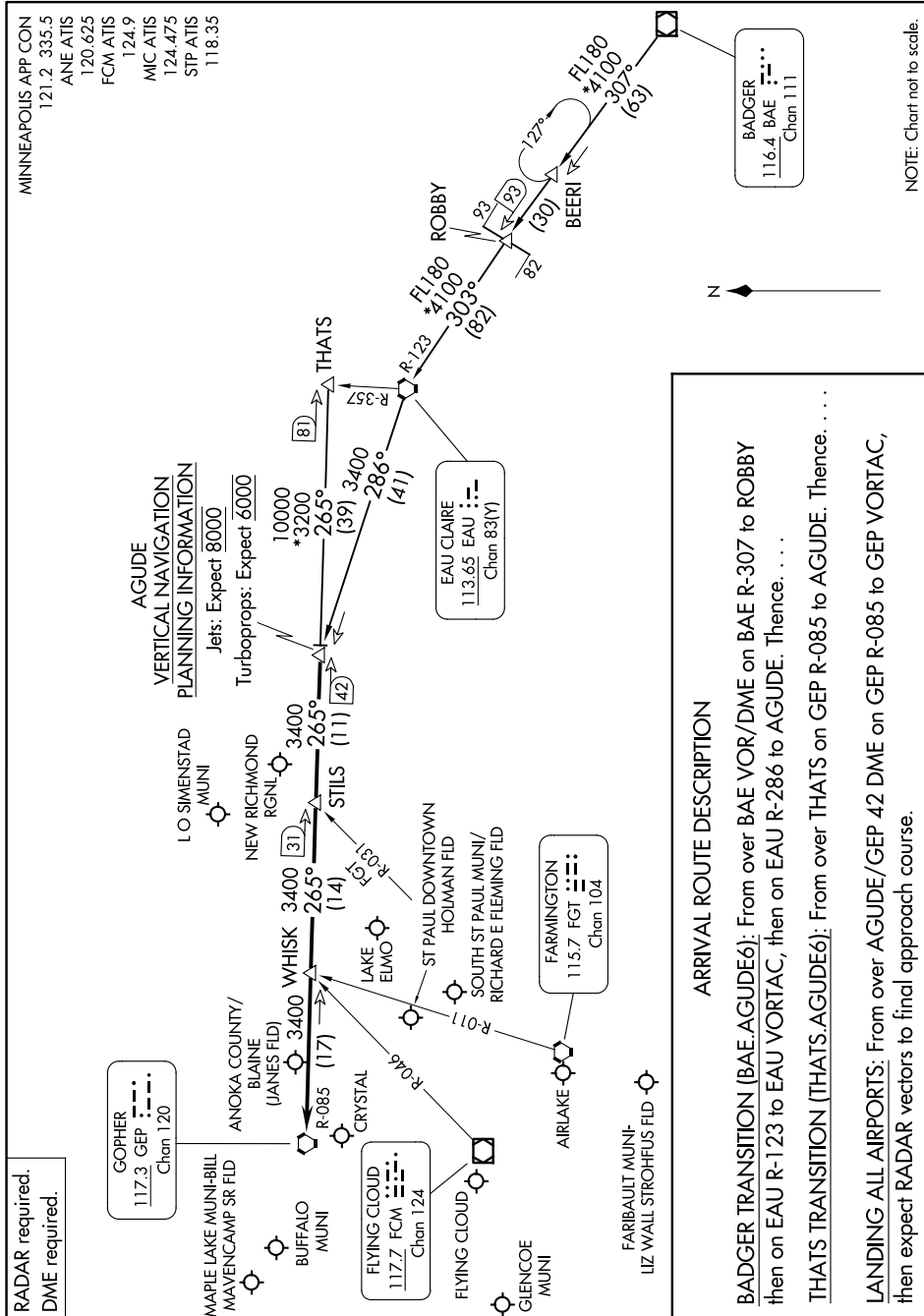


AGUDE SIX ARRIVAL

AL-263 (FAA)

MINNEAPOLIS-ST PAUL, MINNESOTA

9200 N01 60 01 9200 2020 N01 11 1-C-N



RADAR required.
DME required.

GOPHER
117.3 GEP
Chan 120

FLYING CLOUD
117.7 FCM
Chan 124

EAU CLAIRE
113.65 EAU
Chan 83(Y)

FARMINGTON
115.7 FGT
Chan 104

ARRIVAL ROUTE DESCRIPTION

BADGER TRANSITION (BAE.AGUDE6): From over BAE VOR/DME on BAE R-307 to ROBBERY then on EAU R-123 to EAU VORTAC, then on EAU R-286 to AGUDE. Thence. . . .

THATS TRANSITION (THATS.AGUDE6): From over THATS on GEP R-085 to AGUDE. Thence. . . .

LANDING ALL AIRPORTS: From over AGUDE/GEP 42 DME on GEP R-085 to GEP VORTAC, then expect RADAR vectors to final approach course.

AGUDE SIX ARRIVAL