

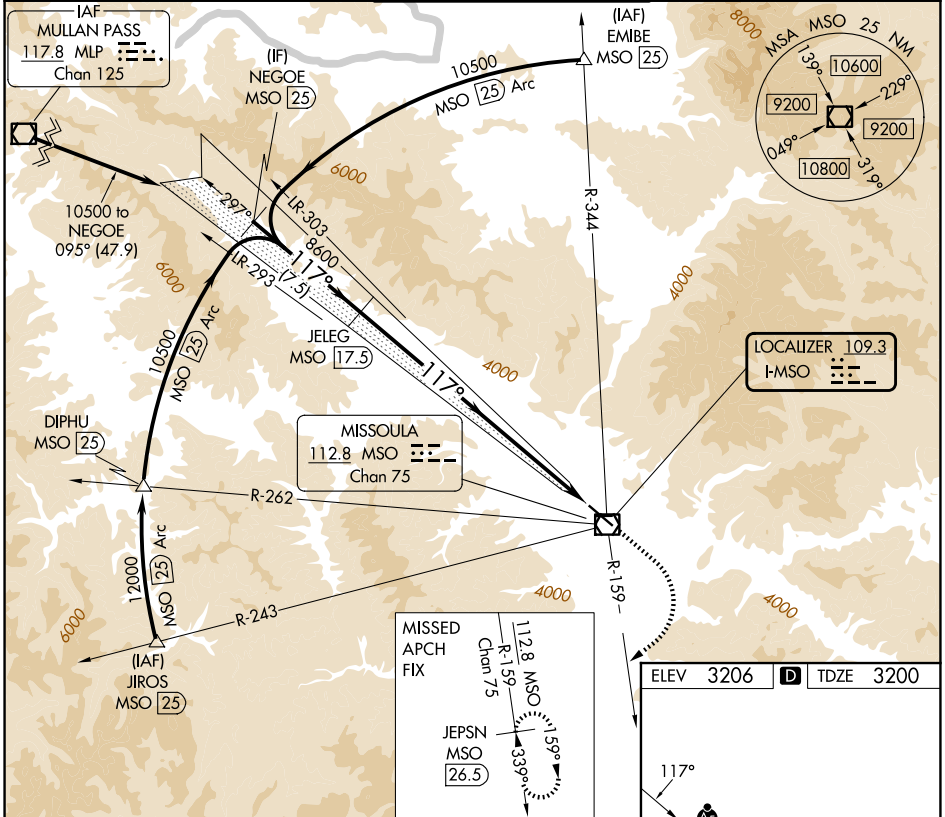
LOC I-MSO 109.3	APP CRS 117°	Rwy Ldg TDZE Apt Elev	9501 3200 3206
---------------------------	------------------------	-----------------------------	---

ILS Z RWY 12

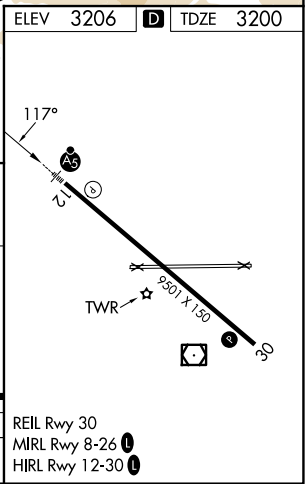
MISSOULA MONTANA (MISO)

DME required.		MALSRS 	MISSED APPROACH: Climb to 3620 then climbing right turn to 10300 on MSO VOR/DME R-159 to JEPSN/MSO 26.5 DME and hold. Missed approach requires minimum climb of 410 feet per NM to 9800; if unable to meet climb gradient, see ILS Y RWY 12.
	-11°C		

ATIS 126.65	SPOKANE APP CON * 124.9 298.95	MISSOULA TOWER * 118.4 (CTAF) 377.175	GND CON 121.9	UNICOM 122.95
-----------------------	--	---	-------------------------	-------------------------



NEG OE MSO 25	JELEG MSO 17.5	3620	10300	JEPSN MSO 26.5
VGSI and ILS glidepath not coincident (VGSI Angle 3.00/TCH 55).				
10500	8600	GS 3.00° TCH 45		
7.5 NM		16.1 NM		
CATEGORY	A	B	C	D
S-ILS 12	3411/24		211 (300-½)	



NW-1, 11 JUN 2026 to 09 JUL 2026

NW-1, 11 JUN 2026 to 09 JUL 2026