

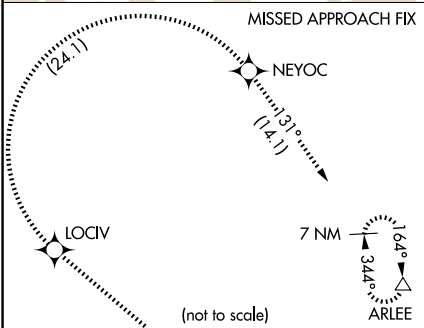
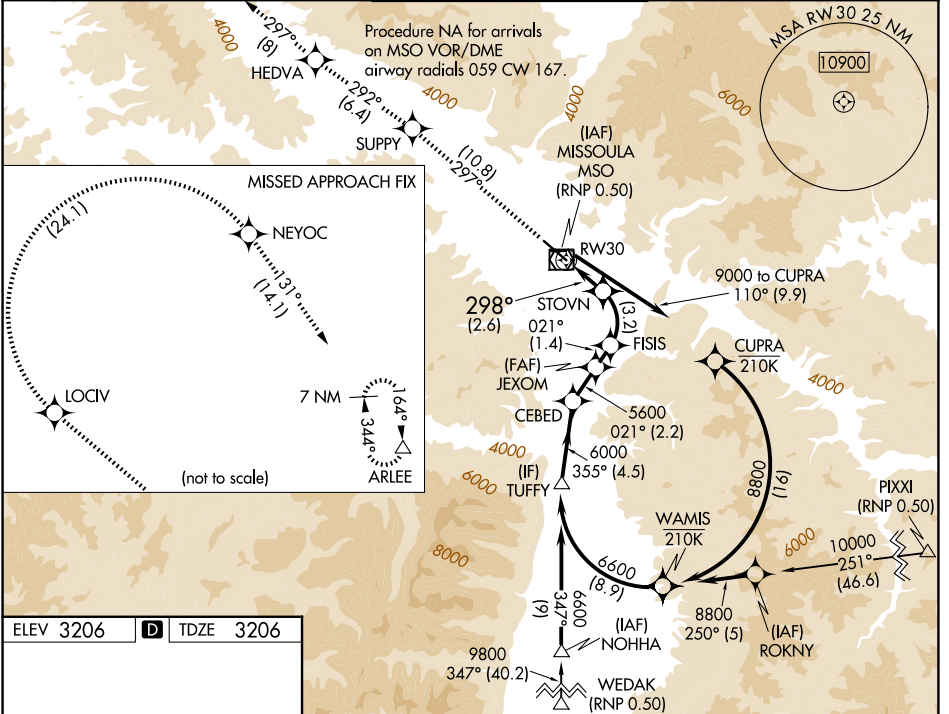
APP CRS 298°	Rwy Ldg TDZE Apt Elev	9501 3206 3206
------------------------	-----------------------------	---

RNAV (RNP) RWY 30

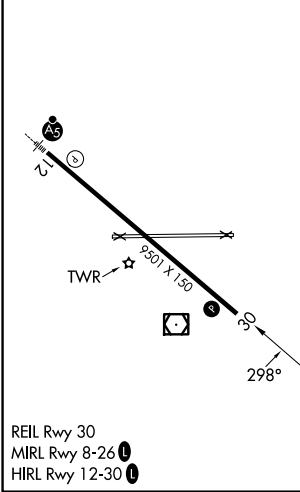
MISSOULA MONTANA (MSO)

RNP AR APCH. RF required.	MISSED APPROACH: Climb to 11000 on track 297° to SUPPY and on track 292° to HEDVA and on track 297° to LOCIV, then right turn to NEYOC and on track 131° to ARLEE and hold. *Misted approach requires minimum climb of 215 feet per NM to 5000.
<p>For uncompensated Baro-VNAV systems, procedure NA below -21°C (-5°F) or above 43°C (109°F). When local altimeter setting not received, procedure NA.</p>	

ATIS 126.65	SPOKANE APP CON * 124.9 298.95	MISSOULA TOWER * 118.4 (CTAF) 377.175	GND CON 121.9	UNICOM 122.95
-----------------------	--	---	-------------------------	-------------------------



ELEV 3206	D	TDZE 3206
-----------	----------	-----------



11000 SUPPY	HEDVA				
tr 297°	tr 292°				
		JEXOM	CEBED	TUFFY	
		FISIS 5135	5600	6600	GP 3.00° TCH 50
		STOVN 4089	021°	021°	
		RW30	298°	355°	
		2.6 NM	3.2 NM	1.4 NM	2.2 NM
2.6 NM	3.2 NM	1.4 NM	2.2 NM	4.5 NM	
CATEGORY	A	B	C	D	
RNP 0.30 DA *	3524-1 318 (400-1)				
RNP 0.30 DA	3582-1¼ 376 (400-1¼)				
AUTHORIZATION REQUIRED					

NW-1, 11 JUN 2026 to 09 JUL 2026

NW-1, 11 JUN 2026 to 09 JUL 2026