

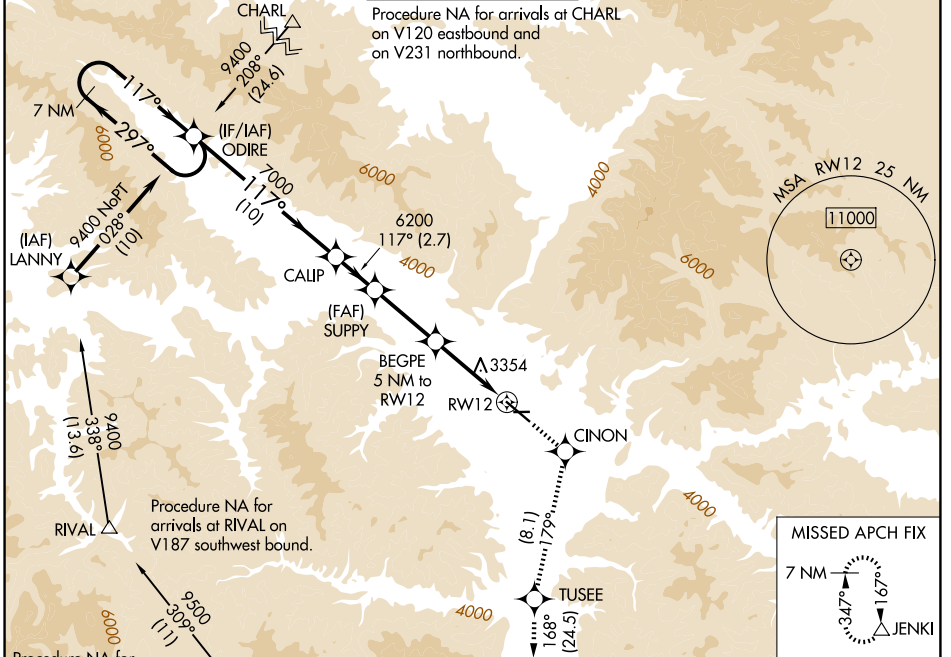
WAAS CH <b>65715</b> <b>W12B</b>	APP CRS <b>117°</b>	Rwy Ldg TDZE Apt Elev	<b>9501</b> <b>3200</b> <b>3206</b>
--	------------------------	-----------------------------	---

# RNAV (GPS) Y RWY 12

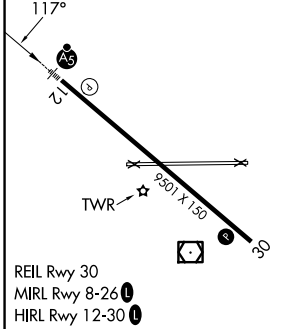
MISSOULA MONTANA (MISO)

RNP APCH.	MALS R	MISSED APPROACH: (Do not exceed 200K until CINON) Climb to 12000 direct CINON and on track 179° to TUSEE and on track 168° to JENKI and hold, continue climb-in-hold to 12000. ## Missed approach requires minimum climb of 325 feet per NM to 7700.
<p>⚠ Circling NA for Cats C and D northeast of Rwy 12-30. Inop table does not apply to LNAV # Cats C/D. Inop table does not apply to LPV † all Cats. **RVR 1800 authorized with use of FD or AP or HUD to DA.</p>		

ATIS <b>126.65</b>	SPOKANE APP CON * <b>124.9 298.95</b>	MISSOULA TOWER * <b>118.4(CTAF) 0 377.175</b>	GND CON <b>121.9</b>	UNICOM <b>122.95</b>
-----------------------	--	--	-------------------------	-------------------------



ELEV 3206	D	TDZE 3200
-----------	---	-----------



	7 NM Holding Pattern	ODIRE	CALIP	SUPPLY	BEGPE 5 NM to RW12	TUSEE	JENKI
	9400	117°	7000	6200	*4840	12000	△
	GP 3.00°						
	TCH 55						
		10 NM	2.7 NM	4.3 NM	3.8 NM	1.2 NM	
CATEGORY	A	B	C	D			
LPV DA ##		3400/24	200 (200-1/2)				
LPV DA †		4229-4	1029 (1100-4)				
LNAV MDA ##		3640/24	440 (500-1/2)	3640/40	440 (500-3/4)		
LNAV MDA #		4520/40 1320 (1400-3/4)	4520/55 1320 (1400-1)	4520-3	1320 (1400-3)		
CIRCLING		4520-1 1/4 1314 (1400-1 1/4)	4700-1 1/2 1494 (1500-1 1/2)	4700-3 1494 (1500-3)	5140-3 1934 (2000-3)		