

WAAS CH 50411 W14A	APP CRS 140°	Rwy Ldg 9618 TDZE 26 Apt Elev 26
--	------------------------	---

RNAV (GPS) RWY 14

MOBILE INTL (BFM)

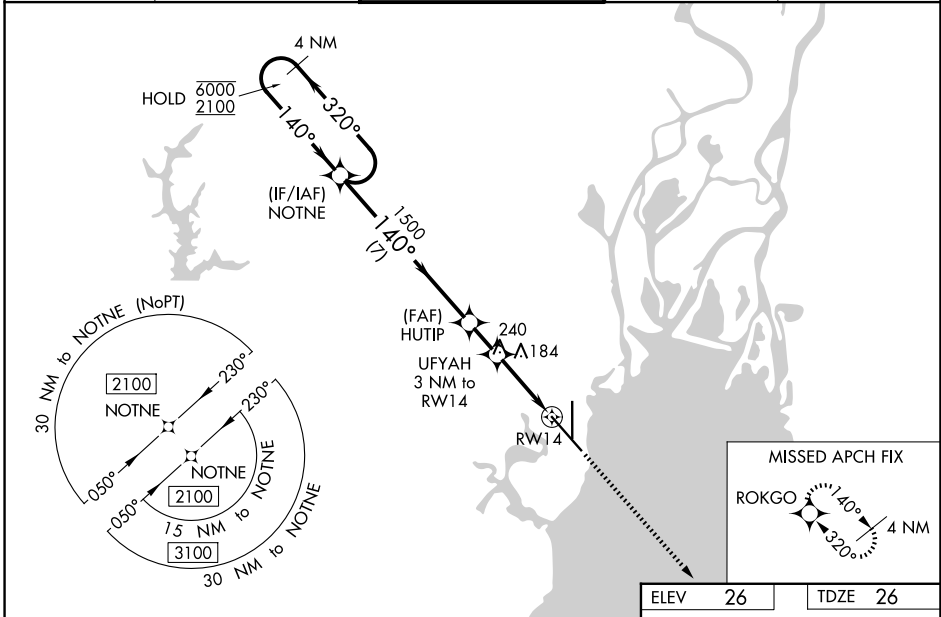
RNP APCH - GPS.



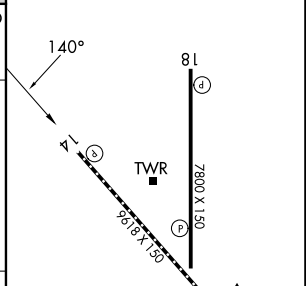
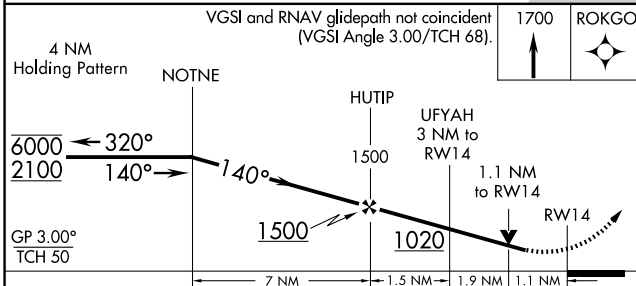
Rwy 14 helicopter visibility reduction below 3/4 SM NA. For uncompensated Baro-VNAV systems, LNAV/VNAV NA below -2°C or above 54°C.

MISSED APPROACH:
Climb to 1700 direct
ROKGO and hold.

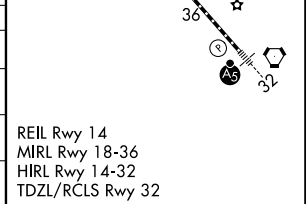
ATIS 135.575	MOBILE APP CON * 118.5 269.3	INTERNATIONAL TOWER* 118.8 (CTAF) 0 251.1	GND CON 121.7 239.3	UNICOM 122.95
------------------------	--	---	-------------------------------	-------------------------



ELEV 26	TDZE 26
---------	---------



CATEGORY	A	B	C	D
LPV DA		308-7/8	282 (300-7/8)	
LNAV/VNAV DA		396-1	370 (400-1)	
LNAV MDA	440-1	414 (500-1)	440-1 1/8	414 (500-1 1/8)
CIRCLING	680-1	654 (700-1)	680-1 3/4	1100-3
			654 (700-1 3/4)	1074 (1100-3)



SE-4, 11 JUN 2026 to 09 JUL 2026

SE-4, 11 JUN 2026 to 09 JUL 2026