

WAAS CH 70304 W32A	APP CRS 320°	Rwy Ldg TDZE Apt Elev	9618 25 26
--	------------------------	-----------------------------	---------------------------------------


RNAV (GPS) RWY 32

MOBILE INTL (BFM)

RNP APCH - GPS.

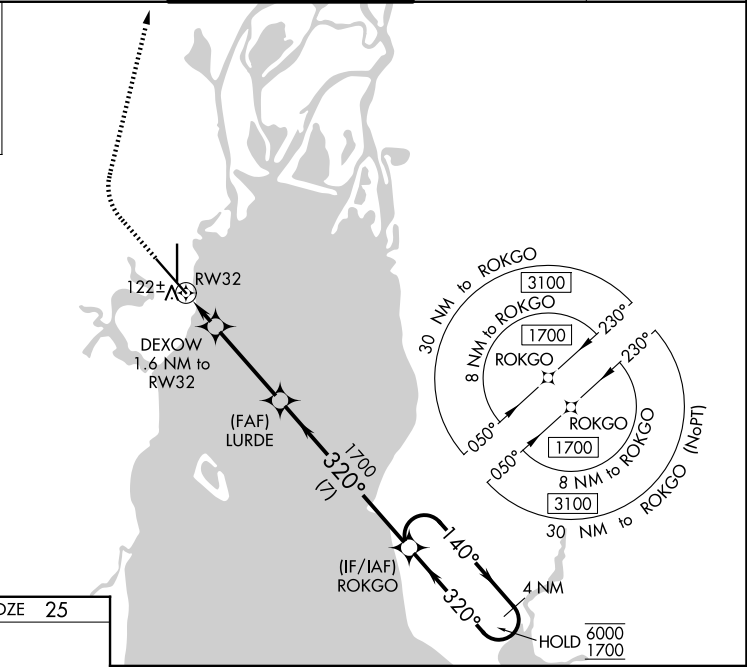
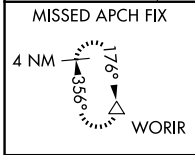
▼ For uncompensated Baro-VNAV systems, LNAV/VNAV NA below -2°C or above 54°C. For inop ALS, increase LNAV/VNAV all Cats visibility to RVR 4000, and LNAV Cats C/D visibility to RVR 5500.

MALSRS

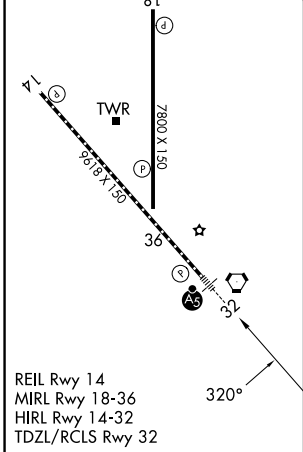


MISSED APPROACH: Climb to 800 then climbing right turn to 2000 direct WORIR and hold.

ATIS 135.575	MOBILE APP CON ★ 118.5 269.3	INTERNATIONAL TOWER ★ 118.8 (CTAF) 0 251.1	GND CON 121.7 239.3	UNICOM 122.95
------------------------	--	--	-------------------------------	-------------------------



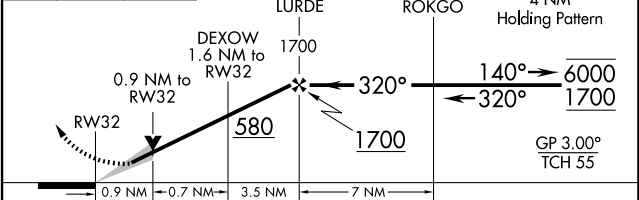
ELEV 26	TDZE 25
---------	---------



800 2000 WORIR

↑ ↻ △

VGSI and RNAV glidepath not coincident (VGSI Angle 3.00/TCH 71).



CATEGORY	A	B	C	D
LPV DA		225/18	200 (200-½)	
LNAV/VNAV DA		283/24	258 (300-½)	
LNAV MDA	380/24	355 (400-½)	380/30	355 (400-¾)
CIRCLING	680-1	654 (700-1)	680-1¾ 654 (700-1¾)	1100-3 1074 (1100-3)

SE-4, 11 JUN 2026 to 09 JUL 2026

SE-4, 11 JUN 2026 to 09 JUL 2026