

HI-ILS or LOC Y RWY 1

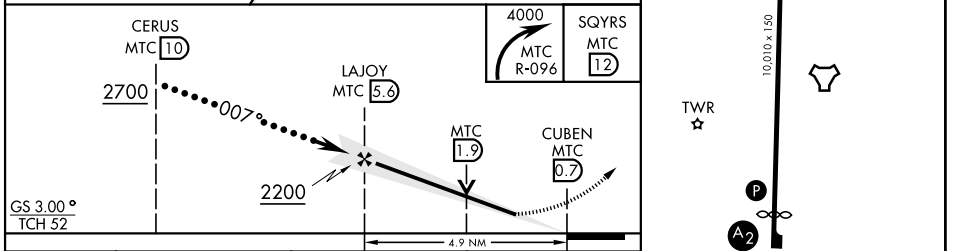
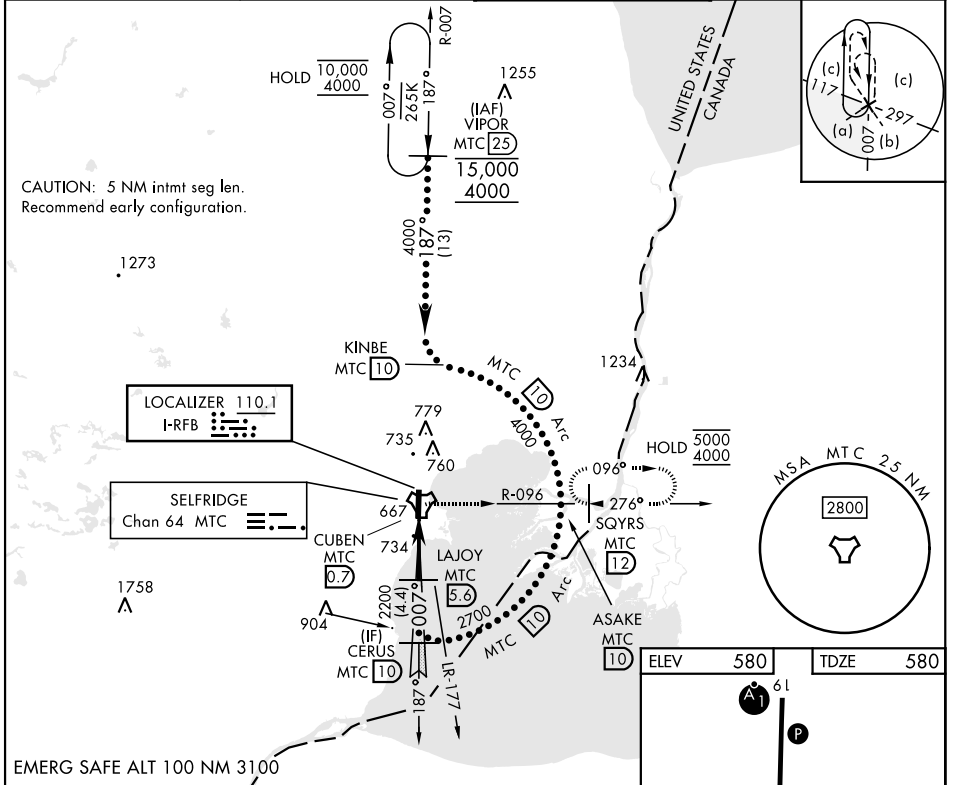
LOC I-RFB 110.1	APCH CRS 007°	Rwy Idg TDZE Arprt Elev 9001 580 580	[USAF]	SELFDRIDGE ANGB (KMTC)
---------------------------	-------------------------	--------------------------------------------------------------------------	--------	------------------------

▼ * When ALS inop, increase RVR to 45 and vis to 7/8 mile.
 ** When ALS inop, increase RVR to 60, vis to 1 1/8 miles.
 *** Circling not authorized W of Rwy 01-19.

SALS **A2**

MISSED APPROACH: Climbing right turn to 4000, intercept MTC R-096 to SQYRS and hold, continue climb-in-hold to 4000.

ATIS 125.325 270.1	APP CON ★ 119.6 391.9	TOWER ★ 120.15 (CTAF) 0 225.4	GND CON 128.3 275.8
------------------------------	---------------------------------	-----------------------------------------	-------------------------------



CATEGORY	C	D	E
S-ILS 01*	873/40	293 (300-3/4)	
S-LOC 01**	1000/50	420 (500-1)	
CIRCLING***	1040-1 1/2	1140-2	560 (600-2)
	460 (500-1 1/2)		

FAF to MAP 4.9 NM					
Knots	120	140	160	180	200
Min:Sec	2:27	2:06	1:50	1:38	1:28

HI-ILS or LOC Y RWY 1

EC-1, 11 JUN 2026 to 09 JUL 2026

EC-1, 11 JUN 2026 to 09 JUL 2026