

HI-TACAN Y RWY 1

TACAN MTC Chan 64	APCH CRS 018°	Rwy ldg TDZE Arprt Elev 9001 580 580
-----------------------------	-------------------------	--

[USAF]

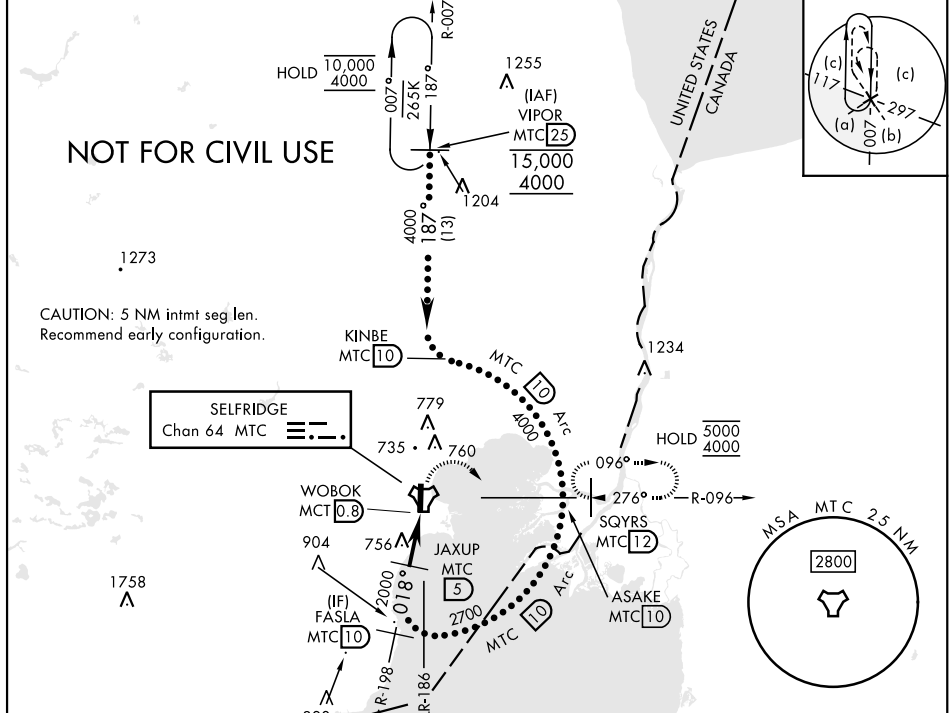
SELFRIDGE ANGB (KMTC)

▼ * When ALS inop, increase vis to 1 1/2 miles.
 ** Circling not authorized W of Rwy 01-19.

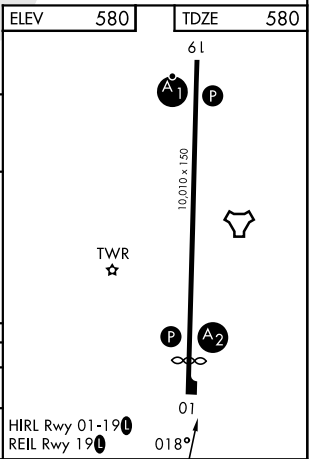
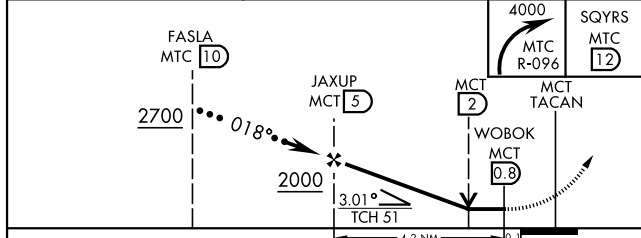
SALS **A2**

MISSED APPROACH: Climbing right turn to 4000, intercept MTC R-096 to SQYRS and hold, continue to climb in hold to 4000.

ATIS 125.325 270.1	APP CON ★ 119.6 391.9	TOWER ★ 120.15 (CTAF) 0 225.4	GND CON 128.3 275.8
------------------------------	---------------------------------	---	-------------------------------



ELEV	580	TDZE	580
------	-----	------	-----



CATEGORY	C	D	E
S-1*	1040/55	460 (500-1)	
CIRCLING **	1040-1 1/2 460 (500-1 1/2)	1140-2	560 (600-2)

HI-TACAN Y RWY 1

EC-1, 11 JUN 2026 to 09 JUL 2026

EC-1, 11 JUN 2026 to 09 JUL 2026