

MT. CLEMENS, MICHIGAN

# ILS or LOC Z RWY 1

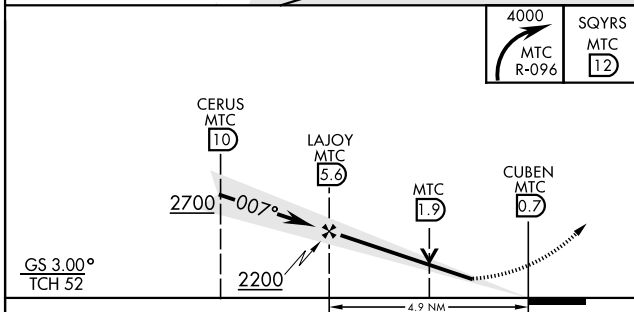
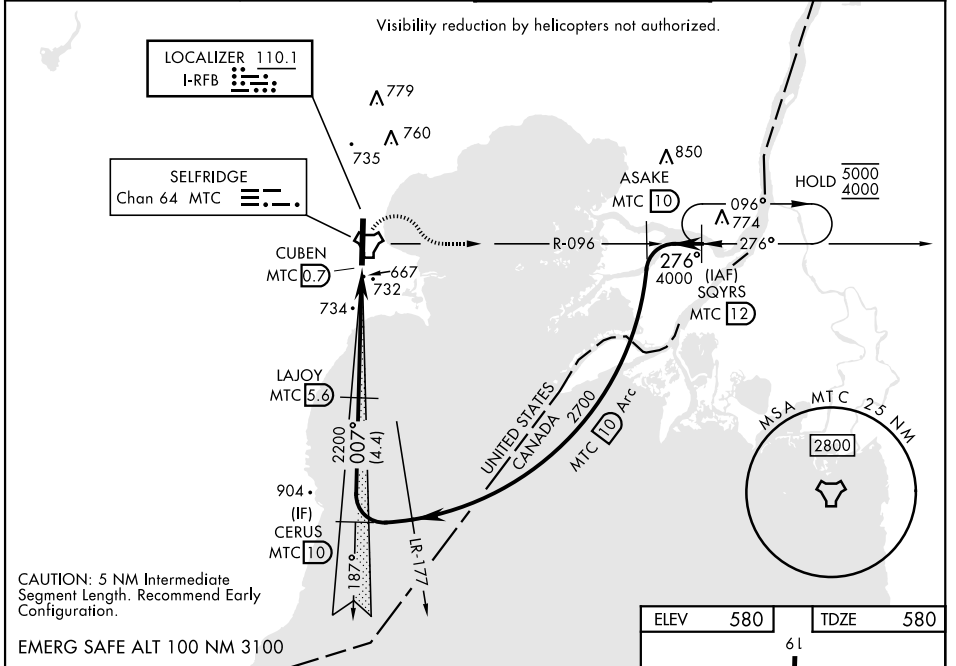
LOC I-RFB <b>110.1</b>	APCH CRS <b>007°</b>	Rwy Idg TDZE Arpt Elev <b>9001</b> <b>580</b> <b>580</b>	[USAF]	SELFRIDGE ANGB (KMTC)
---------------------------	-------------------------	---	--------	-----------------------

**▽** \* When ALS inop, increase RVR to 45, vis to 7/8 mile.  
 \*\* When ALS inop, increase CAT AB RVR to 55 and vis to 1 mile; CAT CDE RVR to 60, vis to 1 1/8 miles.  
 \*\*\* Circling not authorized W of Rwy 01-19.

SALS  
**A2**

MISSED APPROACH: Climbing right turn to 4000, intercept MTC R-096 to SQYRS and hold, continue climb-in-hold to 4000.

ATIS <b>125.325 270.1</b>	APP CON ★ <b>119.6 391.9</b>	TOWER ★ <b>120.15 (CTAF) 0 225.4</b>	GND CON <b>128.3 275.8</b>
------------------------------	---------------------------------	---	-------------------------------



ELEV 580	TDZE 580
----------	----------

61  
 100.0 x 150  
 TWR  
 A1  
 P  
 A2  
 01  
 007°  
 HIRL Rwy 01-19  
 REIL Rwy 19

FAF to MAP 4.9 NM					
Knots	60	90	120	150	180
Min:Sec	4:54	3:16	2:27	1:58	1:38

CATEGORY	A	B	C	D	E
S-ILS 01*	873/40		293	(300-3/4)	
S-LOC 01**	1000/40 420 (500-3/4)		1000/50 420 (500-1)		
CIRCLING ***	1040-1 460 (500-1)		1040-1 1/2 460 (500-1 1/2)		1140-2 560 (600-2)

MT. CLEMENS, MICHIGAN 42° 37' N-82° 50' W SELFRIDGE ANGB (KMTC)

Amdt 4 26DEC24

# ILS or LOC Z RWY 1

EC-1, 11 JUN 2026 to 09 JUL 2026

EC-1, 11 JUN 2026 to 09 JUL 2026