

MT. CLEMENS, MICHIGAN

# RNAV (GPS) RWY 1

APCH CRS	Rwy Idg	9001
007°	TDZE	580
	Arpt Elev	580

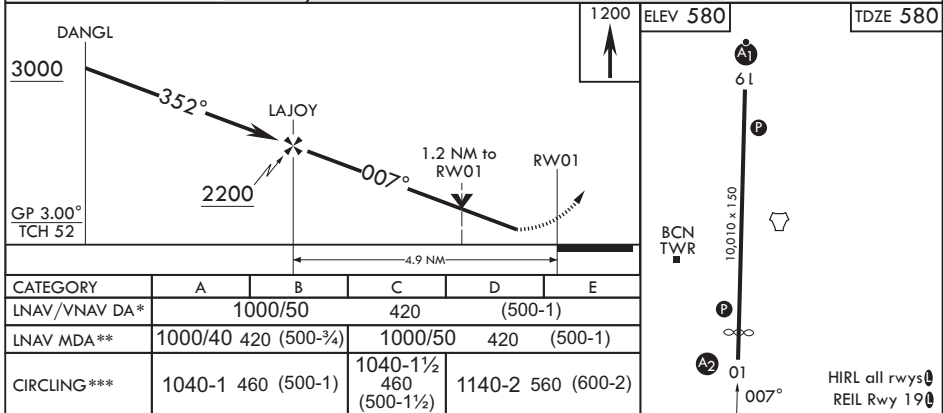
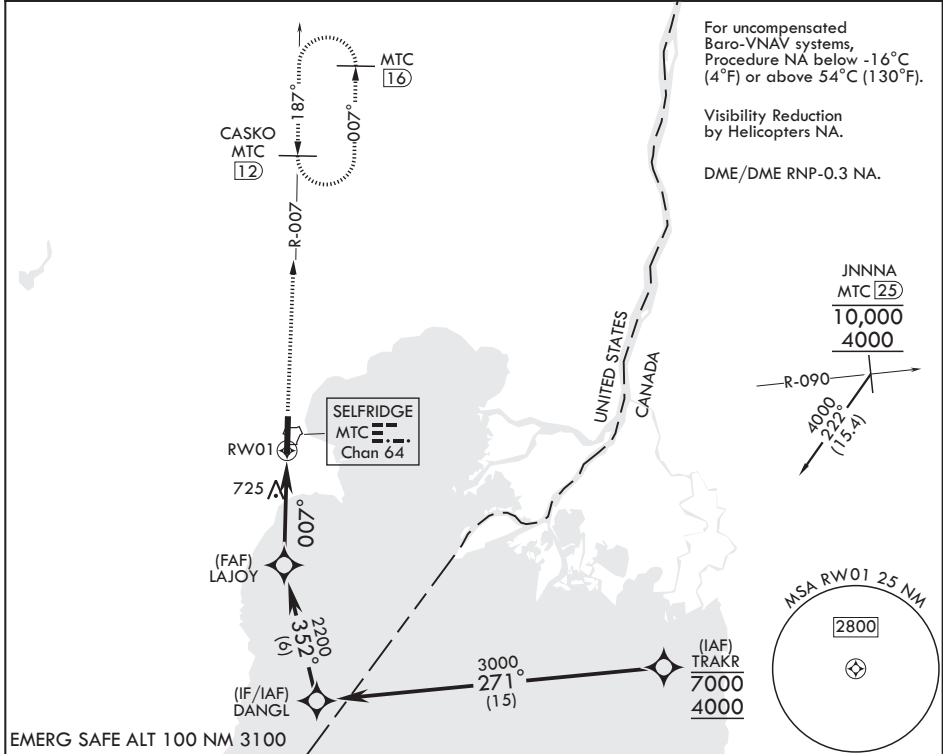
(USAF)

SELFRIDGE ANGB (KMTC)

**▼** \* When ALS inop increase RVR to 60, vis to 1 1/8 miles.  
 \*\* When ALS inop increase CAT AB RVR to 55, vis to 1 mile; CAT CDE RVR to 60, vis to 1 1/8 miles.  
 \*\*\* Circling not authorized W of Rwy 01-19.

**SALS** MISSED APPROACH: Climb to 1200 then climbing right turn to 4000 direct CASKO (MTC TACAN R-007/12 DME) and hold, continue climb-in-hold to 4000.

ATIS <b>125.325 270.1</b>	APP CON/DEP CON* <b>119.6 391.9</b>	TOWER* <b>120.15 (CTAF) 225.4</b>	GND CON <b>128.3 275.8</b>
------------------------------	--	--------------------------------------	-------------------------------



MT. CLEMENS, MICHIGAN  
 Orig 20MAY21

42°37'N - 82°50'W

SELFRIDGE ANGB (KMTC)

# RNAV (GPS) RWY 1

EC-1, 11 JUN 2026 to 09 JUL 2026

EC-1, 11 JUN 2026 to 09 JUL 2026