

RNAV (GPS) RWY 6

NAPA COUNTY (APC)

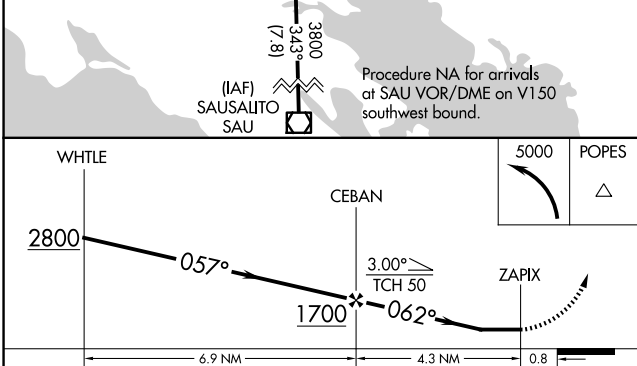
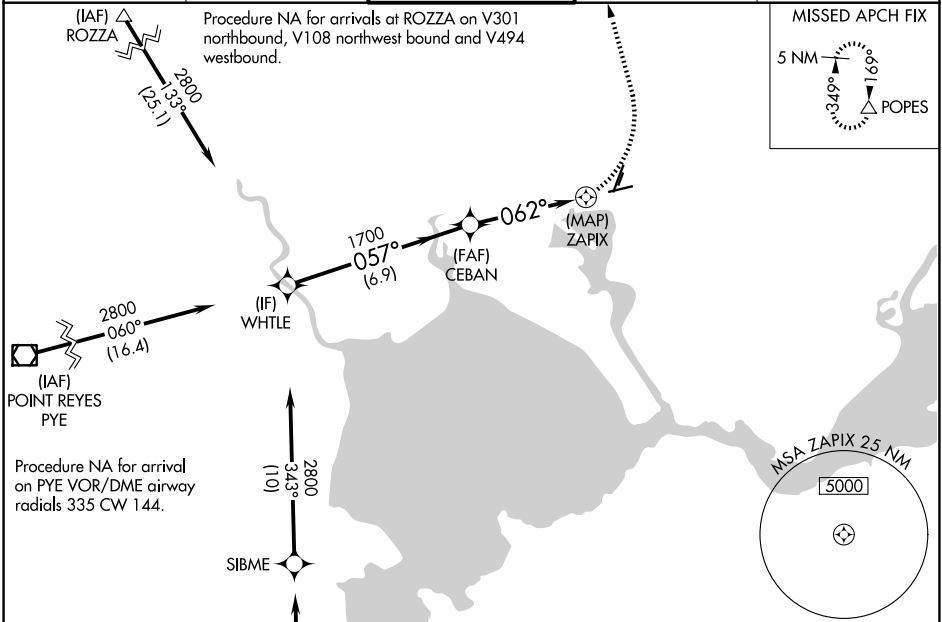
APP CRS	Rwy Ldg	5008
062°	TDZE	21
	Apt Elev	36

RNP APCH-GPS.

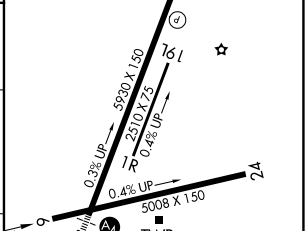
▼ Rwy 6 helicopter visibility reduction below ¼ SM NA.
▲ Circling Cats A/B/C NA east of Rwy 19R and northwest of Rwy 24. Circling Cat D NA east of Rwy 19L-1R.

MISSED APPROACH: Climbing left turn to 5000 direct POPES and hold, continue climb-in-hold to 5000.
 *Missed approach requires minimum climb of 410 feet per NM to 2200.

ATIS 124.05	OAKLAND CENTER 127.8 353.5	NAPA TOWER* 118.7 (CTAF) 257.8	GND CON 121.7	UNICOM 122.95
------------------------------	---	---	--------------------------------	--------------------------------



ELEV 36	TDZE 21
---------	---------



CATEGORY	A	B	C	D
LNVA MDA*	480-1	459 (500-1)	480-1 3/8	459 (500-1 3/8)
LNVA MDA	1340-1 1/4 1319 (1400-1 1/4)	1340-1 1/2 1319 (1400-1 1/2)	1340-3	1319 (1400-3)
CIRCLING	1340-1 1/4 1304 (1400-1 1/4)	1340-1 1/2 1304 (1400-1 1/2)	1340-3	1304 (1400-3)

REIL Rwy 6 **①**
 MIRL Rwy 6-24 and 1L-19R **①**

SW-2, 11 JUN 2026 to 09 JUL 2026

SW-2, 11 JUN 2026 to 09 JUL 2026