

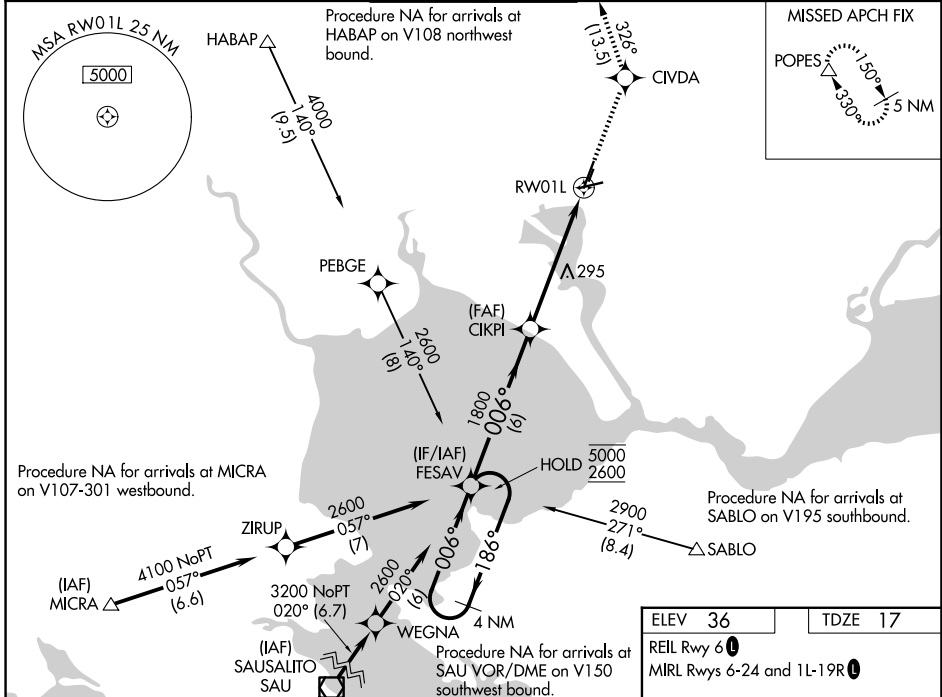
WAAS CH 56613 W01A	APP CRS 006°	Rwy Ldg 5930 TDZE 17 Apt Elev 36
--	------------------------	---

RNAV (GPS) Y RWY 1L

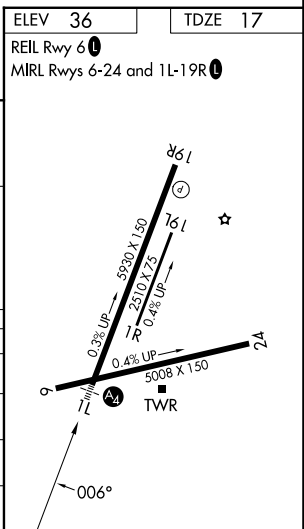
NAPA COUNTY (APC)

RNP APCH - GPS.	MALS 	MISSED APPROACH: Climb to 5000 direct CIVDA and on track 326° to POPES and hold, continue climb-in-hold to 5000.
<p>⚠ For uncompensated Baro-VNAV systems, LNAV/VNAV NA below -2°C or above 54°C. Inop table does not apply to LPV, LNAV/VNAV all Cats, and LNAV Cats A/C/D. Circling Cats A/B/C NA northeast of Rwy 19R and 24. Circling Cat D NA east of Rwy 19L and 1R.</p>		

ATIS 124.05	OAKLAND CENTER 127.8 353.5	NAPA TOWER* 118.7 (CTAF) 257.8	GND CON 121.7	UNICOM 122.95
-----------------------	--------------------------------------	--	-------------------------	-------------------------



4 NM Holding Pattern FESAV		5000	CIVDA	tr	POPES
<p>5000 ← 186°</p> <p>2600 → 006°</p> <p>GP 3.00° TCH 50</p>		1800	4 NM to RWY1L	RWY1L	
6 NM		1.5 NM	4 NM		
CATEGORY	A	B	C	D	
LPV DA		1252-5	1235 (1300-5)		
LNAV/VNAV DA		1051-4	1034 (1100-4)		
LNAV MDA	1340-1¼	1323 (1400-1¼)	1340-3	1323 (1400-3)	
CIRCLING	1340-1¼ 1304 (1400-1¼)	1340-1½ 1304 (1400-1½)	1340-3	1304 (1400-3)	



SW-2, 11 JUN 2026 to 09 JUL 2026

SW-2, 11 JUN 2026 to 09 JUL 2026