

VORTAC	SGD	APP CRS	Rwy Ldg	5008
112.1		050°	TDZE	21
Chan 58			Apt Elev	36

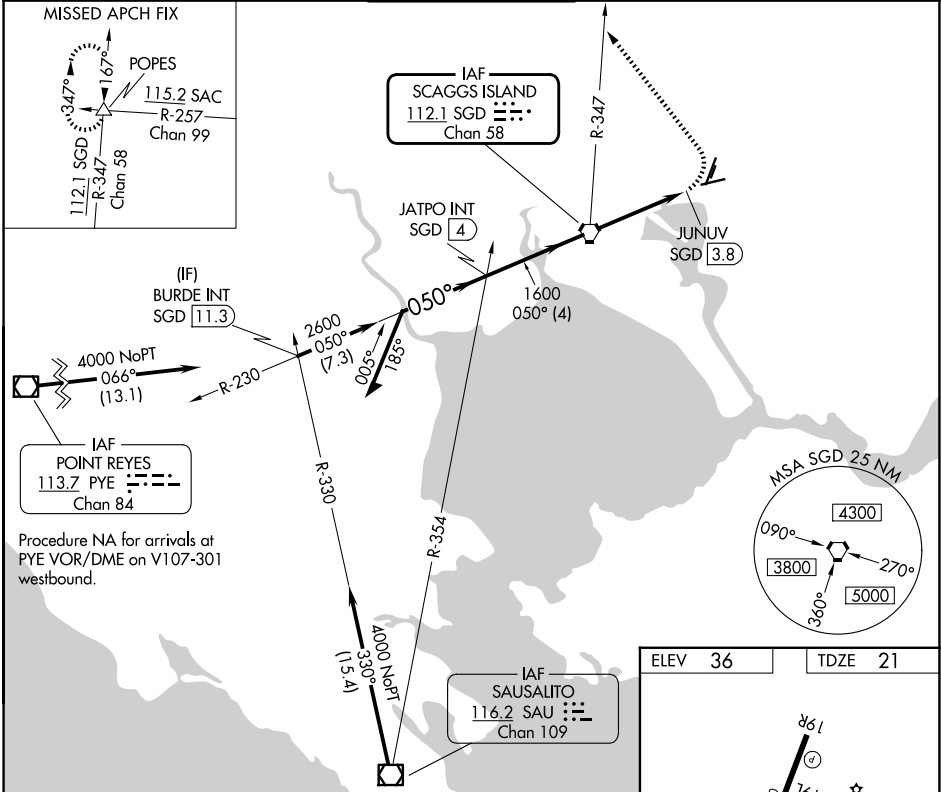
VOR RWY 6

NAPA COUNTY (APC)

⚠ Rwy 6 helicopter visibility reduction below 3/4 SM NA. Circling Cats A/B/C NA east of Rwy 19R and northwest of Rwy 24. Circling Cat D NA east of Rwy 19L-1R.

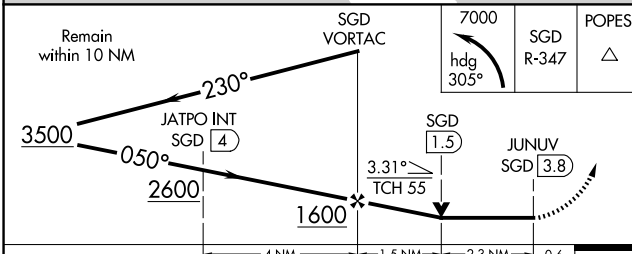
MISSED APPROACH: Climbing left turn to 7000 on heading 305° and SGD VORTAC R-347 to POPES INT and hold, continue climb-in-hold to 7000.

ATIS 124.05	OAKLAND CENTER 127.8 353.5	NAPA TOWER* 118.7 (CTAF) 257.8	GND CON 121.7	UNICOM 122.95
-----------------------	--------------------------------------	---	-------------------------	-------------------------

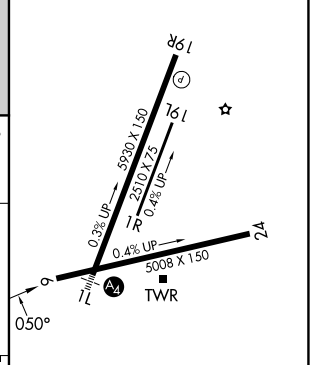


SW-2, 11 JUN 2026 to 09 JUL 2026

SW-2, 11 JUN 2026 to 09 JUL 2026



ELEV 36	TDZE 21
---------	---------



CATEGORY	A	B	C	D
S-6	1080-1 1/4 1059 (1100-1 1/4)	1080-1 1/2 1059 (1100-1 1/2)	1080-3 1059 (1100-3)	
CIRCLING	1080-1 1/4 1044 (1100-1 1/4)	1080-1 1/2 1044 (1100-1 1/2)	1280-3 1244 (1300-3)	1300-3 1264 (1300-3)

REIL Rwy 6				
MIRL Rws 6-24 and 1L-19R				
FAF to MAP 3.8 NM				
Knots	60	90	120	150 180
Min:Sec	3:48	2:32	1:54	1:31 1:16