

# GDOGG FOUR DEPARTURE (RNAV)

NASHVILLE DEP CON  
119.35 372.0  
D-ATIS 135.1  
CLNC DEL 126.05  
CPDLC  
GND CON  
121.9 348.6  
NASHVILLE TOWER  
118.6 257.8

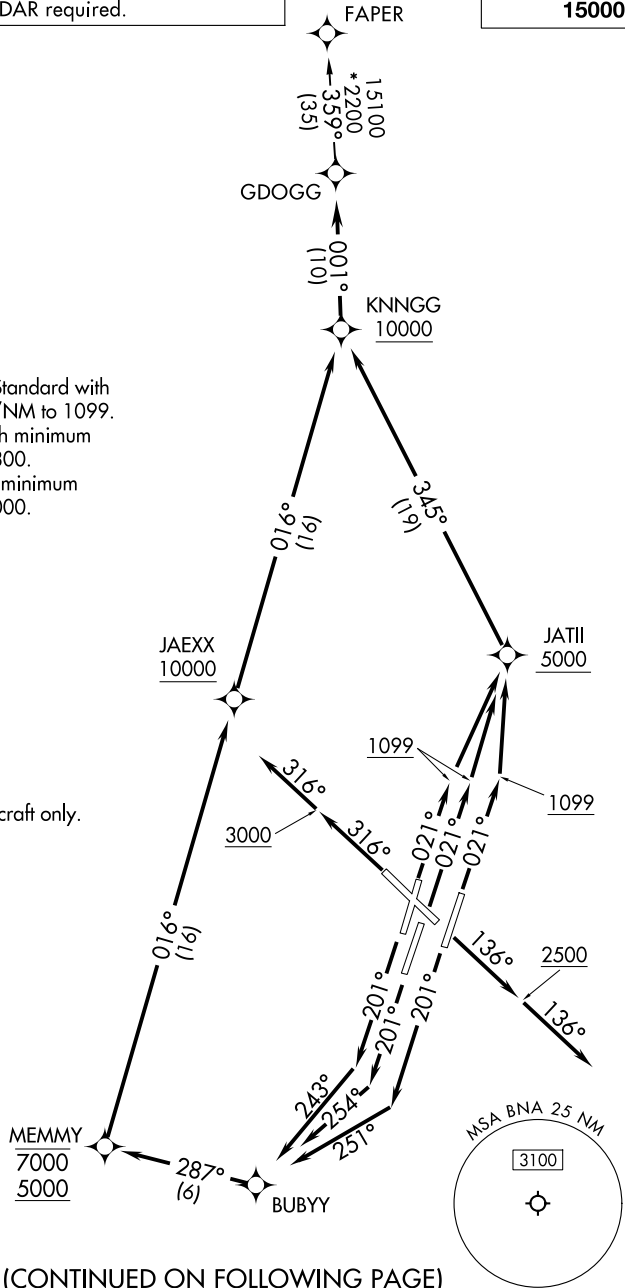
RNAV 1 - DME/DME/IRU or GPS.  
RADAR required.

**TOP ALTITUDE:  
15000**

**TAKEOFF MINIMUMS:**

- Rwy 13: Standard.
- Rwys 2L/C/R, 20L/R: Standard with minimum climb of 500'/NM to 1099.
- Rwy 20C: Standard with minimum climb of 500'/NM to 1300.
- Rwy 31: Standard with minimum climb of 250'/NM to 3000.

NOTE: Jet aircraft only.



SE-1, 11 JUN 2026 to 09 JUL 2026

SE-1, 11 JUN 2026 to 09 JUL 2026

NOTE: Chart not to scale.

(CONTINUED ON FOLLOWING PAGE)