

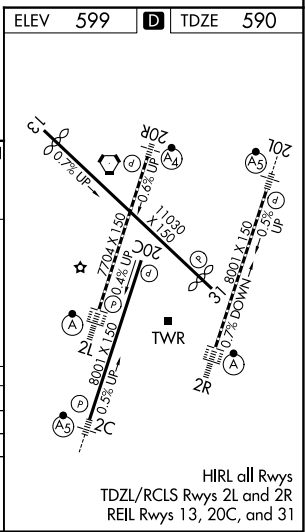
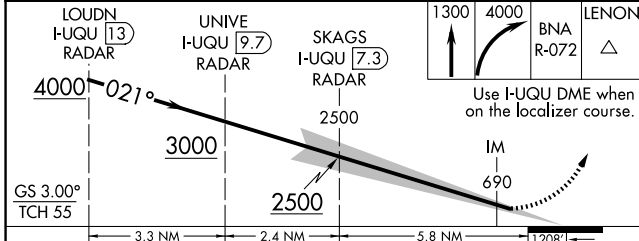
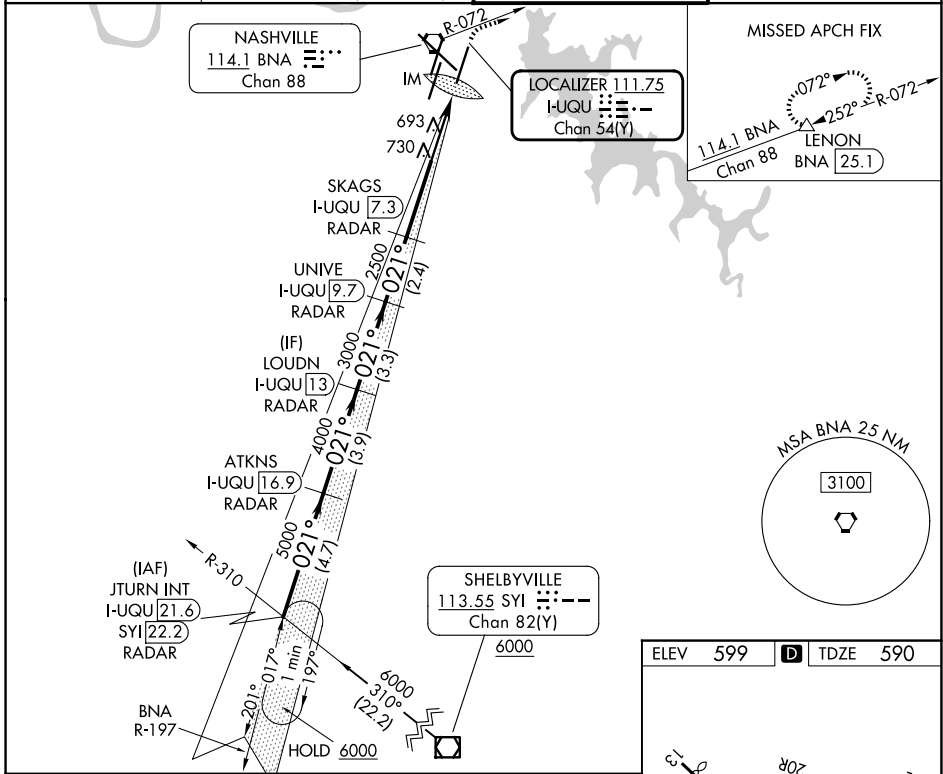
LOC/DME I-UQU <b>111.75</b> Chan <b>54 (Y)</b>	APP CRS <b>021°</b>	Rwy Ldg TDZE Apt Elev	<b>8000</b> <b>590</b> <b>599</b>
--	------------------------	-----------------------------	---

# ILS RWY 2R (CAT II & III)

## NASHVILLE INTL (BNA)

DME required.	ALSF-2	MISSED APPROACH: Climb to 1300, then climbing right turn to 4000 on BNA VORTAC R-072 to LENON/ BNA 25.1 DME and hold.
<p>Simultaneous approach authorized. Cat II: RVR 1000 authorized with specific OPSPEC, MSPEC, or LOA approval and use of autoland or HUD to touchdown.</p>		

D-ATIS <b>135.1</b>	NASHVILLE APP CON <b>118.4 360.7</b> (030°-196°) <b>119.35 372.0</b> (197°-029°)	NASHVILLE TOWER <b>118.6 257.8</b>	GND CON <b>121.9 348.6</b>
------------------------	--	---------------------------------------	-------------------------------



CATEGORY	A	B	C	D
S-ILS 2R	CAT II RA 116/12 100 DA 690			
S-ILS 2R	CAT III RVR 06			
<b>CATEGORY II &amp; III ILS - SPECIAL AIRCREW &amp; AIRCRAFT CERTIFICATION REQUIRED</b>				

SE-1, 11 JUN 2026 to 09 JUL 2026

SE-1, 11 JUN 2026 to 09 JUL 2026