

(KRSTA4.KRSTA) 25331

AL-282 (FAA)

NASHVILLE INTL (BNA)
NASHVILLE, TENNESSEE

KRSTA FOUR DEPARTURE (RNAV)

NASHVILLE DEP CON
119.35 372.0
D-ATIS 135.1
CLNC DEL 126.05
CPDLC
GND CON
121.9 348.6
NASHVILLE TOWER
118.6 257.8

RNAV 1 - DME/DME/IRU or GPS.

RADAR required.

**TOP ALTITUDE:
15000**

NOTE: Jet aircraft only.

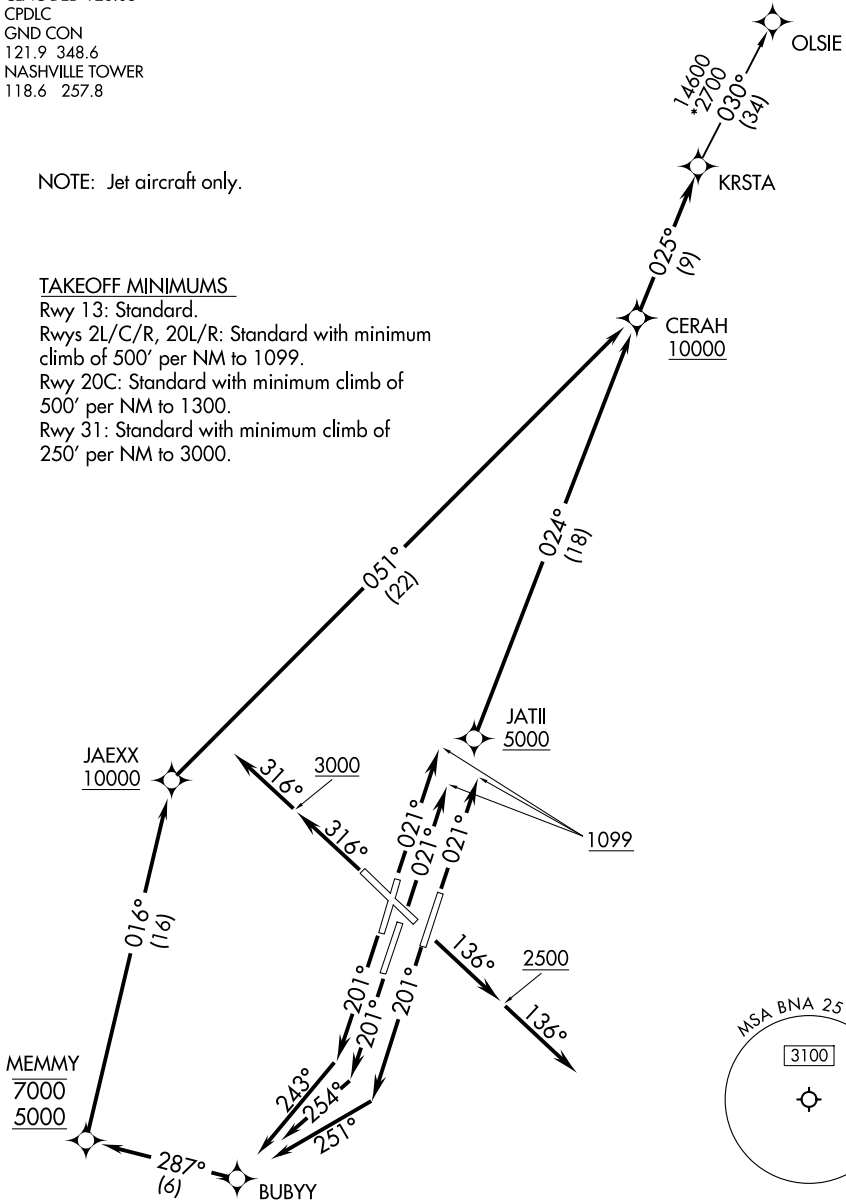
TAKEOFF MINIMUMS

Rwy 13: Standard.

Rwys 2L/C/R, 20L/R: Standard with minimum climb of 500' per NM to 1099.

Rwy 20C: Standard with minimum climb of 500' per NM to 1300.

Rwy 31: Standard with minimum climb of 250' per NM to 3000.



(CONTINUED ON FOLLOWING PAGE)

NOTE: Chart not to scale.

KRSTA FOUR DEPARTURE (RNAV)
(KRSTA4.KRSTA) 27NOV25

NASHVILLE, TENNESSEE
NASHVILLE INTL (BNA)

SE-1, 11 JUN 2026 to 09 JUL 2026

SE-1, 11 JUN 2026 to 09 JUL 2026