


RNAV (RNP) Z RWY 2C

NASHVILLE INTL (BNA)

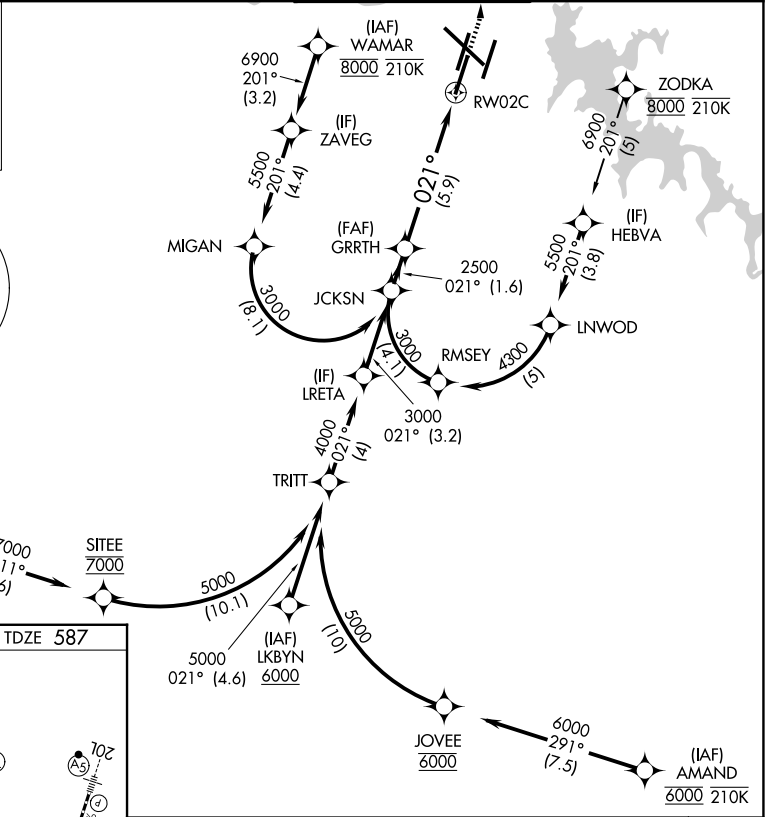
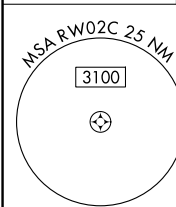
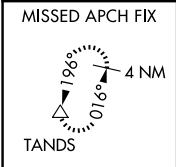
APP CRS **021°** Rwy Ldg **7601**
 TDZE **587**
 Apt Elev **599**

RNP APCH - GPS. Authorization required. From SITEE, JOVEE, LNWOD, RMSEY or MIGAN: RF.

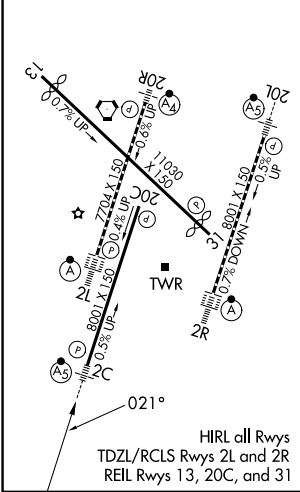
▼ For uncompensated Baro-VNAV systems, procedure NA below -10°C or above 54°C. Simultaneous approach authorized. For inop ALS, increase RNP 0.15 all Cats visibility to RVR 4500, increase RNP 0.30 all Cats visibility to 1½ SM.

MALSR  MISSED APPROACH: Climb to 1300 then climbing left turn to 4000 direct TANDS and hold.

D-ATIS **135.1** NASHVILLE APP CON **118.4 360.7** (030°-196°) NASHVILLE TOWER **118.6 257.8** GND CON **121.9 348.6**
119.35 372.0 (197°-029°)



ELEV 599 **D** TDZE 587



See planview for multiple IF locations.

	JCKSN	GRRTH		
	3000	2500		RW02C
	GP 3.00°			
	TCH 60			
	1.6 NM		5.9 NM	
CATEGORY	A	B	C	D
RNP 0.15 DA		852/24	265 (300-½)	
RNP 0.30 DA		1018/50	431 (500-1)	

AUTHORIZATION REQUIRED

SE-1, 11 JUN 2026 to 09 JUL 2026

SE-1, 11 JUN 2026 to 09 JUL 2026