

APP CRS	Rwy Ldg	7702
021°	TDZE	599
	Apt Elev	599

RNAV (RNP) Z RWY 2L

NASHVILLE INTL (BNA)

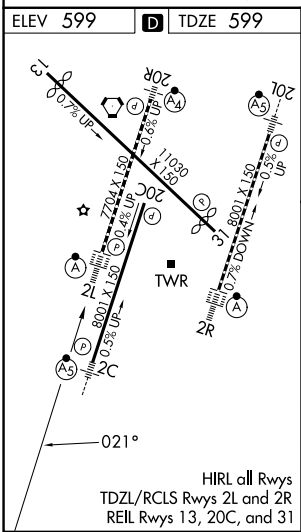
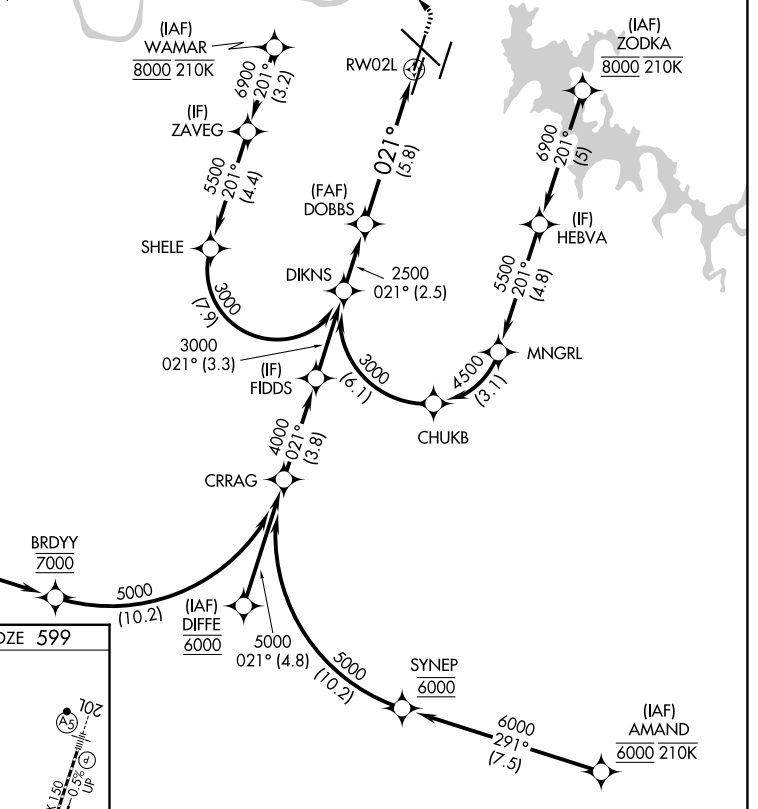
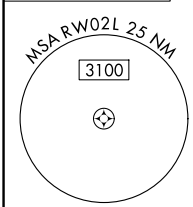
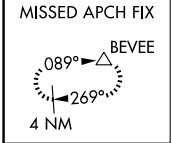
RNP AR APCH - GPS. Authorization required. From BRDYY, SYNEP, MNGRL, CHUKB, or SHELE: RF.

▼ For uncompensated Baro-VNAV systems, procedure NA below -10°C or above 54°C.
 ▲ Simultaneous approach authorized with Rwy 2R. For inop ALSF-2, increase RNP 0.15 all Cats visibility to RVR 4500.

ALSF-2

MISSED APPROACH: Climb to 1200 then climbing left turn to 4000 direct BEVEE and hold.

D-ATIS 135.1	NASHVILLE APP CON 118.4 360.7 (030°-196°) 119.35 372.0 (197°-029°)	NASHVILLE TOWER 118.6 257.8	GND CON 121.9 348.6
------------------------	--	---------------------------------------	-------------------------------



See planview for multiple IF locations.

DIKINS	DOBBS	1200	4000	BEVEE
3000	2500	↑	↶	△
GP 3.00°	2500	RW02L		
TCH 55		2.5 NM	5.8 NM	
CATEGORY	A	B	C	D
RNP 0.15 DA	898/24 299 (300-½)			
RNP 0.30 DA	991/35 392 (400-¾)			

AUTHORIZATION REQUIRED

SE-1, 11 JUN 2026 to 09 JUL 2026

SE-1, 11 JUN 2026 to 09 JUL 2026