

APP CRS Rwy Ldg **9487**
316° TDZE **578**
 Apt Elev **599**

RNAV (RNP) Z RWY 31

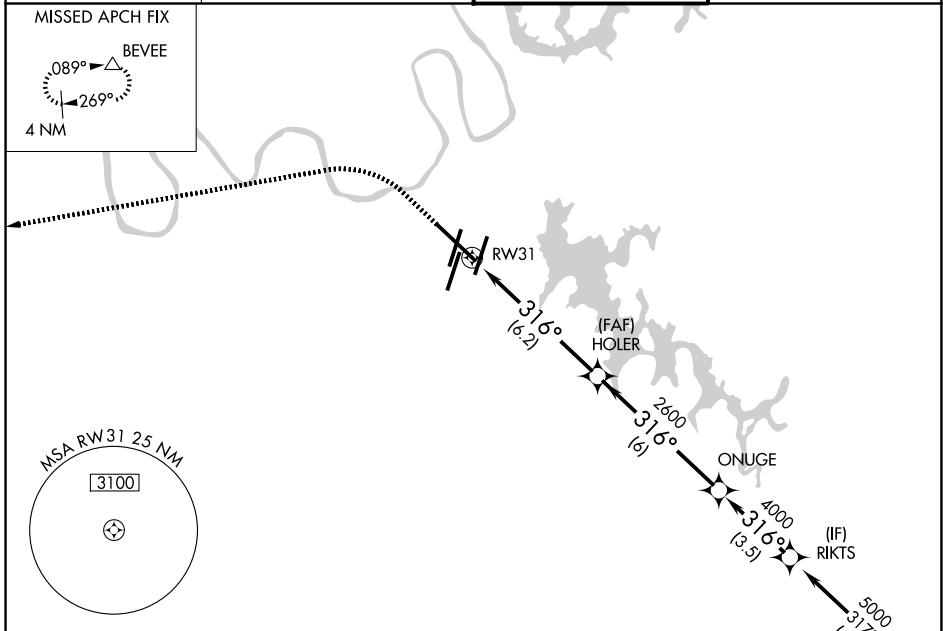
NASHVILLE INTL (BNA)

RNP AR APCH - GPS. Authorization required.

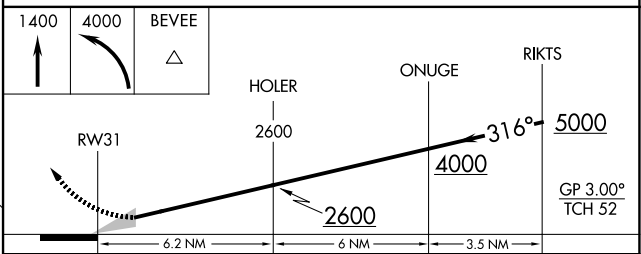
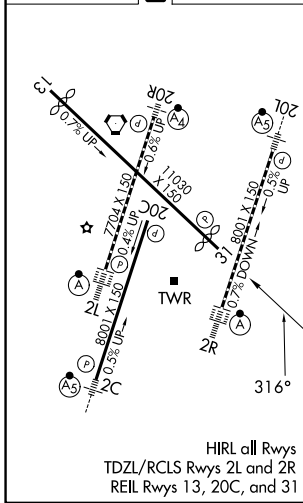
▼ For uncompensated Baro-VNAV systems, procedure NA below -10°C or above 54°C.

MISSED APPROACH: Climb to 1400 then climbing left turn to 4000 direct BEVEE and hold.

D-ATIS 135.1	NASHVILLE APP CON 118.4 360.7 (030°-196°) 119.35 372.0 (197°-029°)	NASHVILLE TOWER 118.6 257.8	GND CON 121.9 348.6
------------------------	--	---------------------------------------	-------------------------------



ELEV 599 **D** TDZE 578



CATEGORY	A	B	C	D
RNP 0.15 DA		914-1	336 (400-1)	
RNP 0.30 DA		1045-1 ³ / ₈	467 (500-1 ³ / ₈)	

AUTHORIZATION REQUIRED

SE-1, 11 JUN 2026 to 09 JUL 2026

SE-1, 11 JUN 2026 to 09 JUL 2026