

WAAS CH <b>42713</b> <b>W02A</b>	APP CRS <b>021°</b>	Rwy Ldg TDZE Apt Elev	<b>7702</b> <b>599</b> <b>599</b>
--	------------------------	-----------------------------	---

# RNAV (GPS) Y RWY 2L

NASHVILLE INTL (BNA)

RNP APCH - GPS.

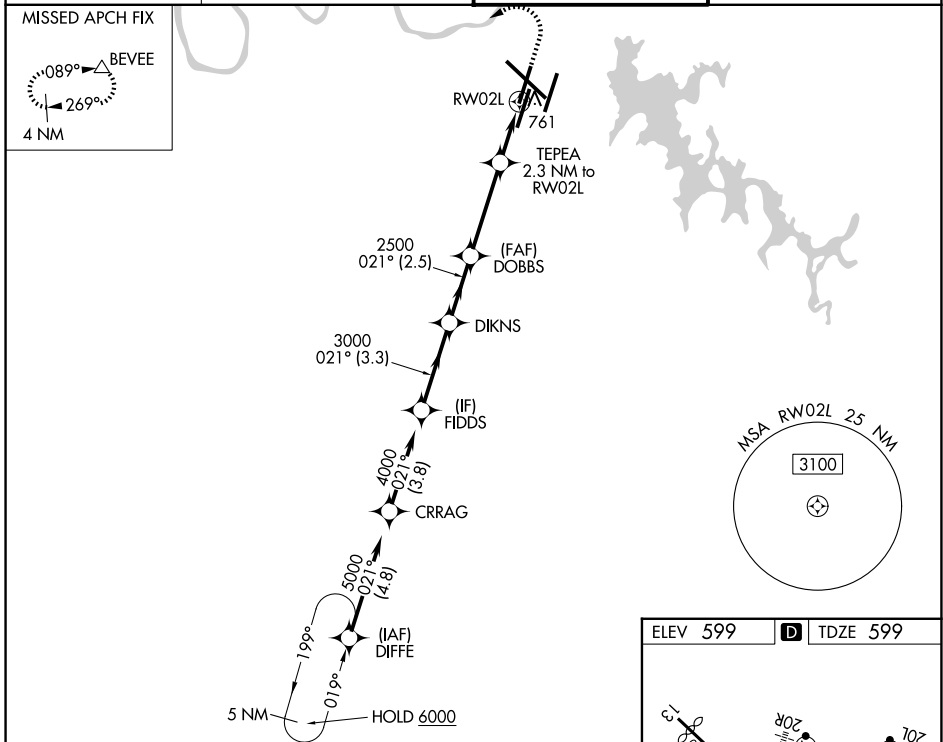
**▼** LNAV procedure NA during simultaneous operations. For uncompensated Baro-VNAV systems, LNAV/VNAV NA below -10°C or above 54°C. Simultaneous approach authorized. Use of FD or AP required during simultaneous operations. For inop ALS, increase LNAV/VNAV all Cats visibility to RVR 5500.

ALSF-2

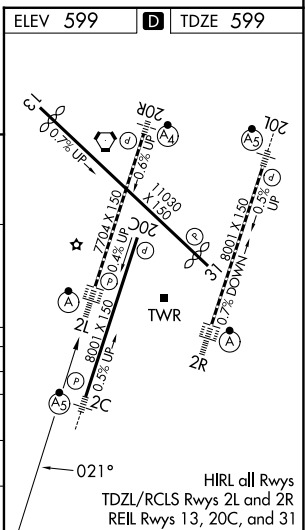


**MISSED APPROACH:** Climb to 1100 then climbing left turn to 4000 direct BEVEE and hold.

D-ATIS <b>135.1</b>	NASHVILLE APP CON <b>118.4 360.7</b> (030°-196°) <b>119.35 372.0</b> (197°-029°)	NASHVILLE TOWER <b>118.6 257.8</b>	GND CON <b>121.9 348.6</b>
------------------------	--	---------------------------------------	-------------------------------



FIDDS	DIKNS	DOBBS	TEPEA 2.3 NM to RW02L	1100	4000	BEVEE
4000	3000	2500	1380	1.2 NM to RW02L	1.2 NM	△
GP 3.00° TCH 55	3.3 NM	2.5 NM	3.5 NM	1.2 NM	1.2 NM	
CATEGORY	A		B		C	
LPV DA	799/18		200 (200-½)			
LNAV/VNAV DA	949/30		350 (400-⅙)			
LNAV MDA	1020/24 421 (500-½)		1020/40 421 (500-¾)			
CIRCLING	1100-1 501 (600-1)		1120-1 521 (600-1)		1200-1¾ 601 (700-1¾) 1380-2½ 781 (800-2½)	



SE-1, 11 JUN 2026 to 09 JUL 2026

SE-1, 11 JUN 2026 to 09 JUL 2026