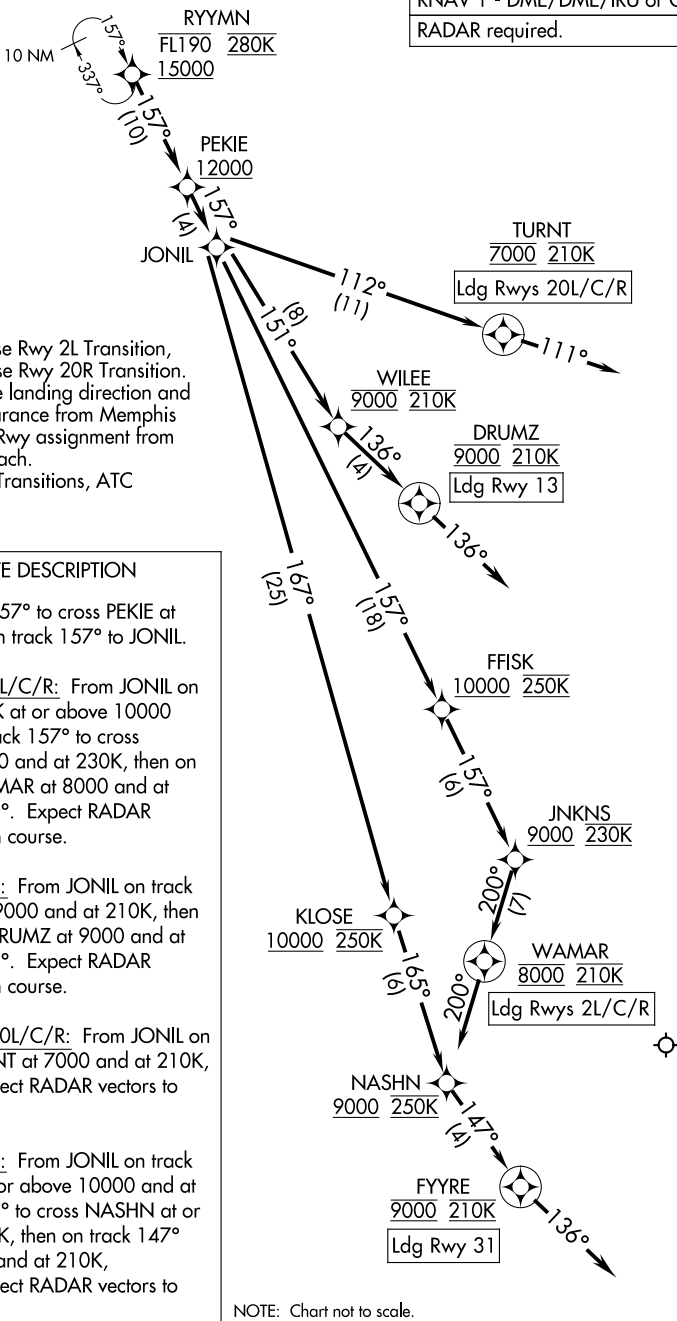


RYYMN THREE ARRIVAL (RNAV) Arrival Routes

NASHVILLE APP CON
119.35 372.0
D-ATIS
135.1

RNAV 1 - DME/DME/IRU or GPS.
RADAR required.



- NOTE: Jet aircraft only.
- NOTE: Landing north use Rwy 2L Transition, Landing south use Rwy 20R Transition.
- NOTE: Expect to receive landing direction and descend via clearance from Memphis Center. Expect Rwy assignment from Nashville approach.
- NOTE: RANTS, ULTRA Transitions, ATC assigned only.

ARRIVAL ROUTE DESCRIPTION

From RYYMN on track 157° to cross PEKIE at or above 12000, then on track 157° to JONIL.

LANDING RUNWAYS 2L/C/R: From JONIL on track 157° to cross FFISK at or above 10000 and at 250K, then on track 157° to cross JNKNS at or above 9000 and at 230K, then on track 200° to cross WAMAR at 8000 and at 210K, then on track 200°. Expect RADAR vectors to final approach course.

LANDING RUNWAY 13: From JONIL on track 151° to cross WILEE at 9000 and at 210K, then on track 136° to cross DRUMZ at 9000 and at 210K, then on track 136°. Expect RADAR vectors to final approach course.

LANDING RUNWAYS 20L/C/R: From JONIL on track 112° to cross TURNT at 7000 and at 210K, then on track 111°. Expect RADAR vectors to final approach course.

LANDING RUNWAY 31: From JONIL on track 167° to cross KLOSE at or above 10000 and at 250K, then on track 165° to cross NASHN at or above 9000 and at 250K, then on track 147° to cross FYYRE at 9000 and at 210K, then on track 136°. Expect RADAR vectors to final approach course.

NOTE: Chart not to scale.

SE-1, 11 JUN 2026 to 09 JUL 2026

SE-1, 11 JUN 2026 to 09 JUL 2026

RYYMN THREE ARRIVAL (RNAV) Arrival Routes