

(SWFFT.SWFFT3) 25275

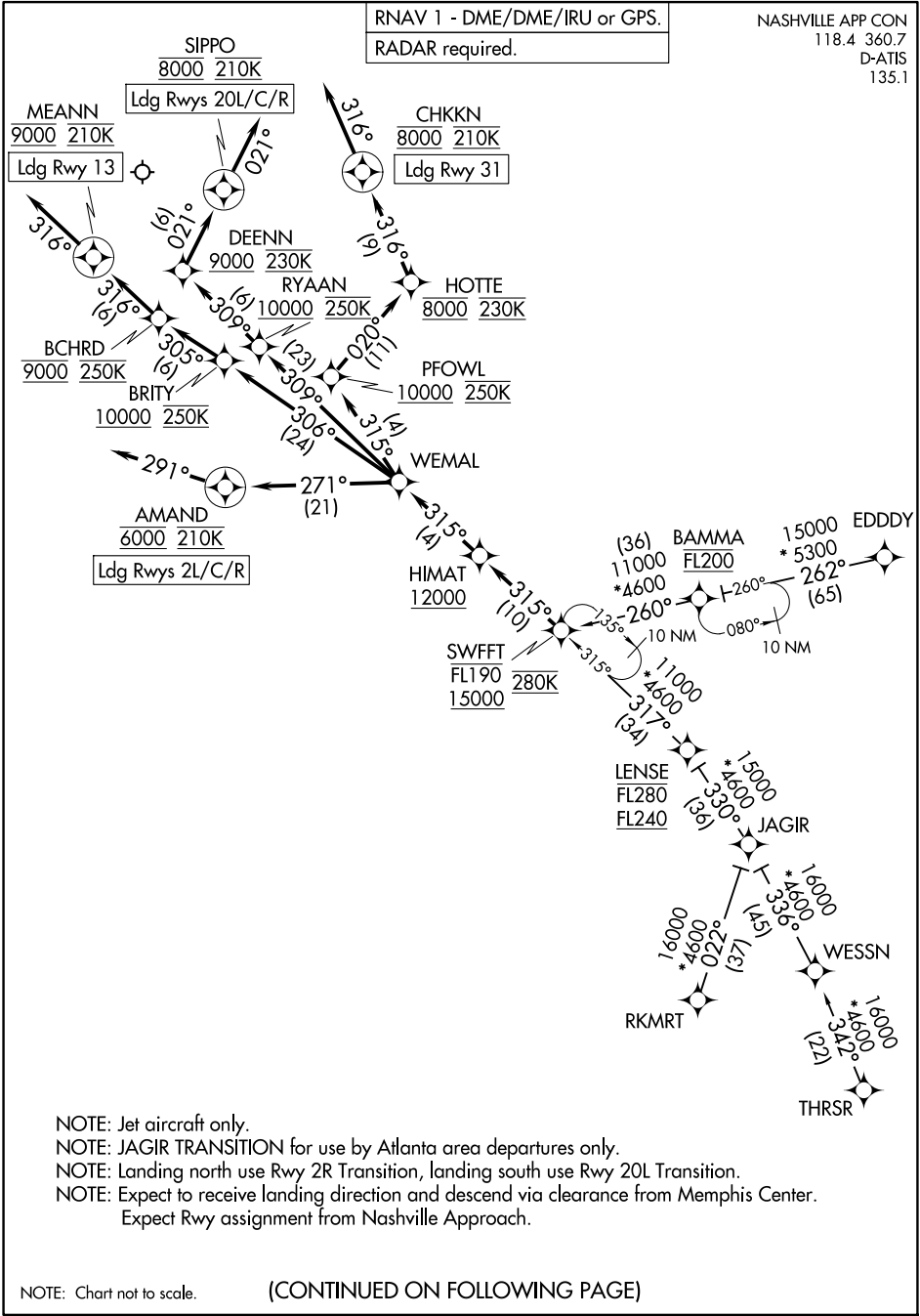
AL-282 (FAA)

NASHVILLE INTL (BNA)
NASHVILLE, TENNESSEE

SWFFT THREE ARRIVAL (RNAV)

RNAV 1 - DME/DME/IRU or GPS.
RADAR required.

NASHVILLE APP CON
118.4 360.7
D-ATIS
135.1



SE-1, 11 JUN 2026 to 09 JUL 2026

SE-1, 11 JUN 2026 to 09 JUL 2026

- NOTE: Jet aircraft only.
- NOTE: JAGIR TRANSITION for use by Atlanta area departures only.
- NOTE: Landing north use Rwy 2R Transition, landing south use Rwy 20L Transition.
- NOTE: Expect to receive landing direction and descend via clearance from Memphis Center.
- NOTE: Expect Rwy assignment from Nashville Approach.

NOTE: Chart not to scale. (CONTINUED ON FOLLOWING PAGE)

SWFFT THREE ARRIVAL (RNAV)

NASHVILLE, TENNESSEE
NASHVILLE INTL (BNA)

(SWFFT.SWFFT3) 02OCT25