

(RUUTH.APPLE3) 26134

AL-289 (FAA)

LAGUARDIA (LGA)

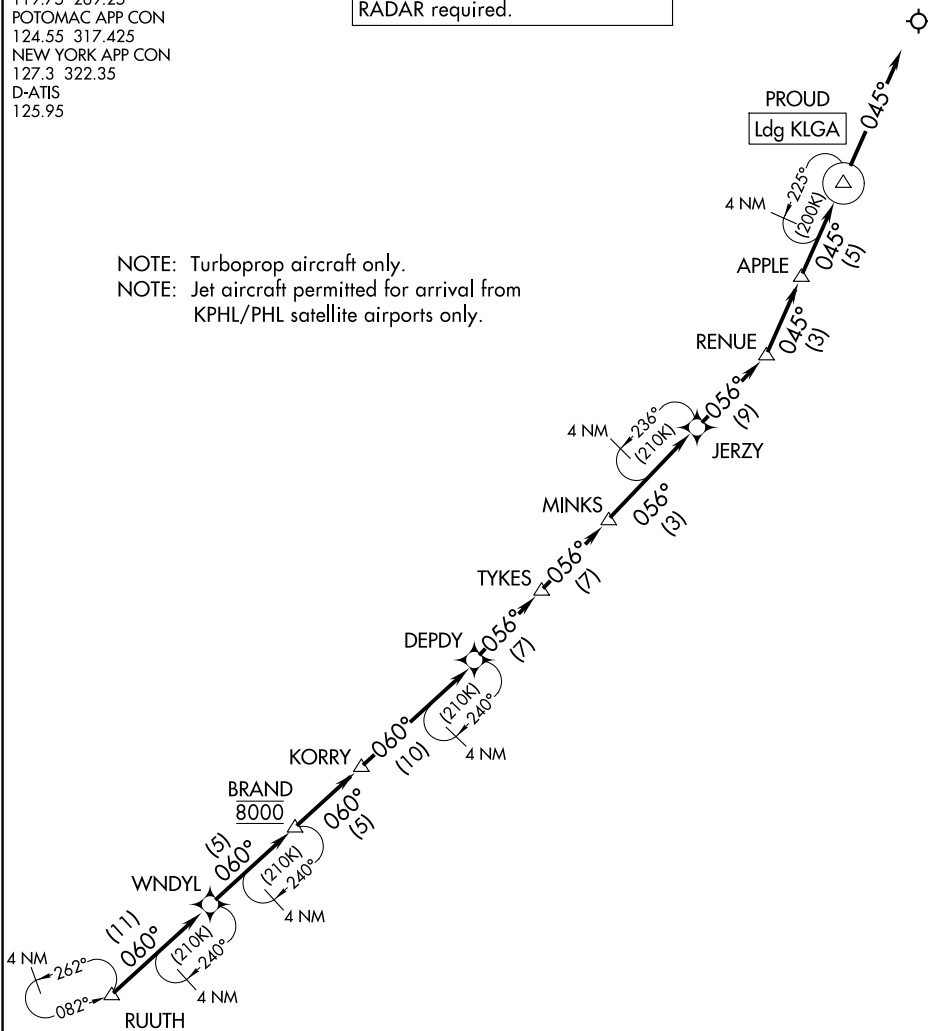
# APPLE THREE ARRIVAL (RNAV) Arrival Routes

NEW YORK, NEW YORK

PHILADELPHIA APP CON  
 119.75 269.25  
 POTOMAC APP CON  
 124.55 317.425  
 NEW YORK APP CON  
 127.3 322.35  
 D-ATIS  
 125.95

RNAV 1 - DME/DME/IRU or GPS.  
 RADAR required.

NOTE: Turboprop aircraft only.  
 NOTE: Jet aircraft permitted for arrival from  
 KPHL/PHL satellite airports only.



NOTE: Chart not to scale.

## ARRIVAL ROUTE DESCRIPTION

From RUUTH on track 060° to WNDYL, then on track 060° to cross BRAND at 8000, then on track 060° to KORRY, then on track 060° to DEPDY, then on track 056° to TYKES, then on track 056° to MINKS, then on track 056° to JERZY, then on track 056° to RENUUE, then on track 045° to APPLE, then on track 045° to PROUD, then on track 045°. Expect RADAR vectors to final approach course.

# APPLE THREE ARRIVAL (RNAV) Arrival Routes

(RUUTH.APPLE3) 25JAN24

NEW YORK, NEW YORK

LAGUARDIA (LGA)

NE-2, 11 JUN 2026 to 09 JUL 2026

NE-2, 11 JUN 2026 to 09 JUL 2026