

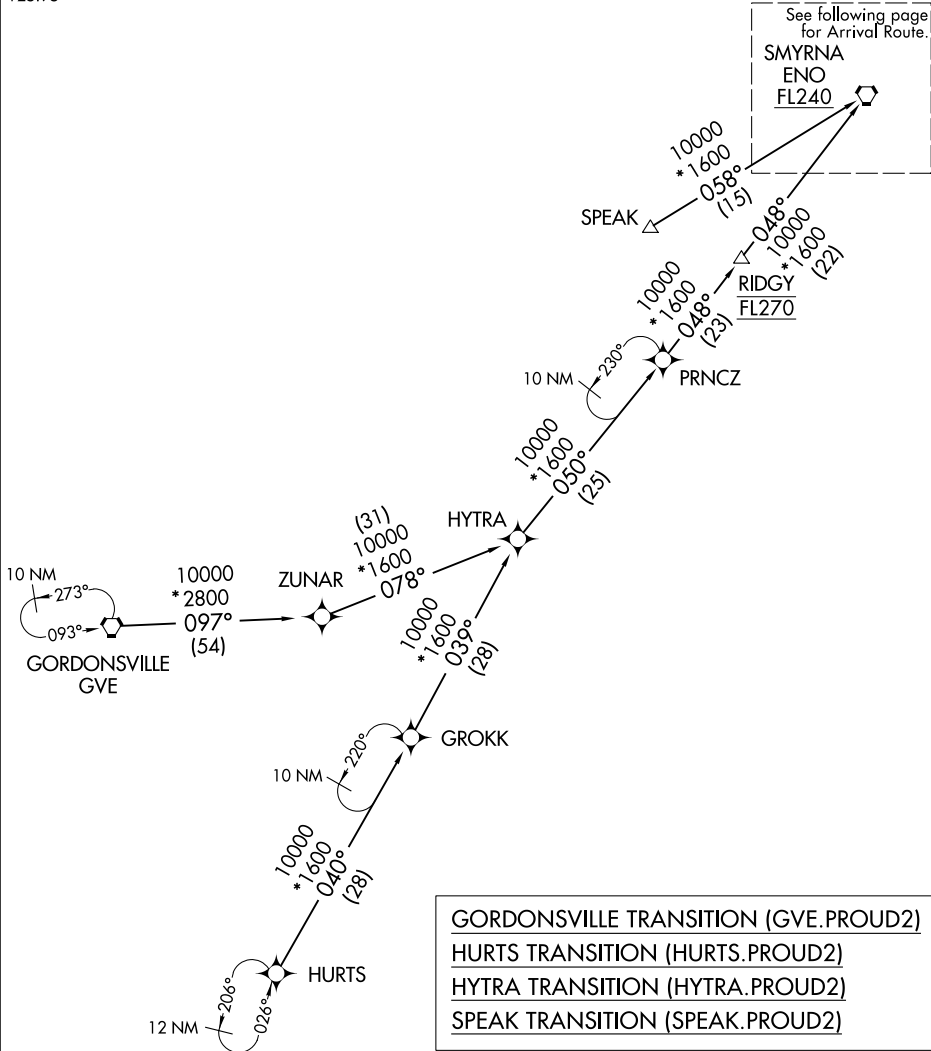
PROUD TWO ARRIVAL (RNAV) Transition Routes

NEW YORK APP CON
127.3 322.35
D-ATIS
125.95

RNAV 1 - DME/DME/IRU or GPS.

RADAR required.

See following page
for Arrival Route.
SMYRNA
ENO
FL240



- GORDONSVILLE TRANSITION (GVE.PROUD2)
- HURTS TRANSITION (HURTS.PROUD2)
- HYTRA TRANSITION (HYTRA.PROUD2)
- SPEAK TRANSITION (SPEAK.PROUD2)

NOTE: Jet aircraft only.
NOTE: SPEAK transition for Washington Metropolitan departures only.

(CONTINUED ON FOLLOWING PAGE)

NOTE: Chart not to scale.

NE-2, 11 JUN 2026 to 09 JUL 2026

NE-2, 11 JUN 2026 to 09 JUL 2026