

PROUD TWO ARRIVAL (RNAV) Arrival Routes

NEW YORK, NEW YORK

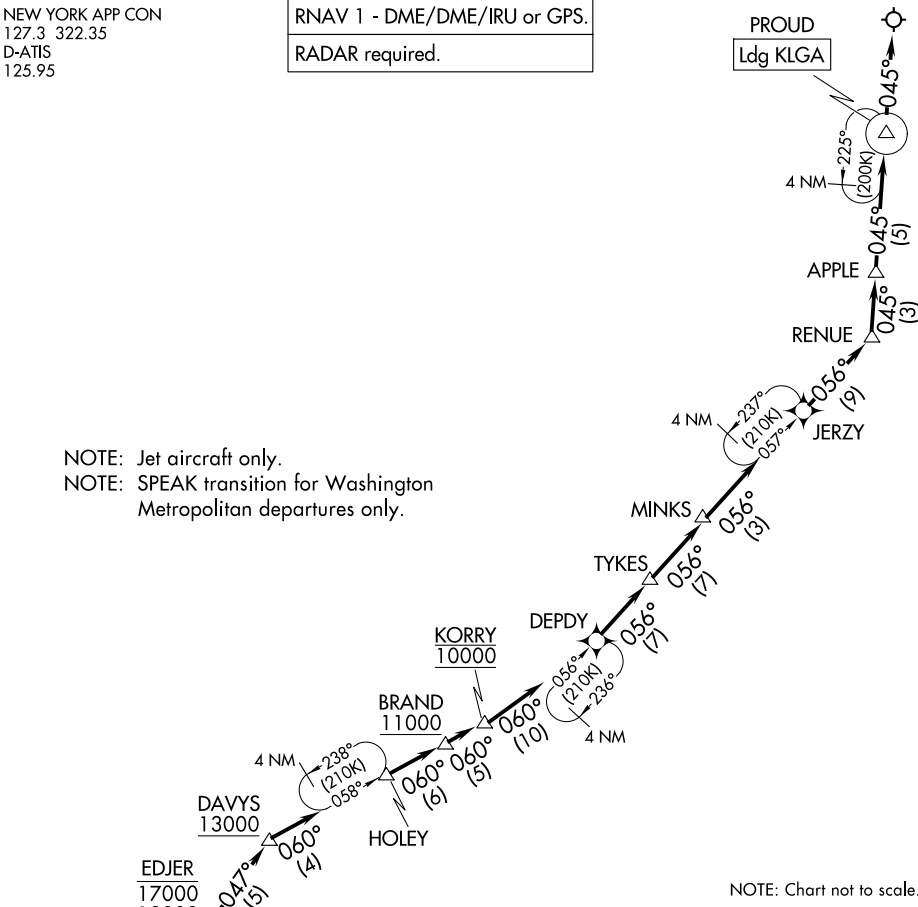
NEW YORK APP CON
127.3 322.35
D-ATIS
125.95

RNAV 1 - DME/DME/IRU or GPS.

RADAR required.

PROUD
Ldg KLG A

NOTE: Jet aircraft only.
NOTE: SPEAK transition for Washington Metropolitan departures only.



NOTE: Chart not to scale.

ARRIVAL ROUTE DESCRIPTION

From ENO VORTAC on track 047° to cross SKIPY between FL190 and FL220, then on track 048° to cross BESSI at or above 17000, then on track 046° to cross EDJER between 13000 and 17000, then on track 047° to cross DAVYS at or above 13000, then on track 060° to HOLEY, then on track 060° to cross BRAND at or above 11000, then on track 060° to cross KORRY at 10000, then on track 060° to DEPDI, then on track 056° to TYKES, then on track 056° to MINKS, then on track 056° to JERZY, then on track 056° to RENU, then on track 045° to APPLE, then on track 045° to PROUD, then on track 045°. Expect RADAR vectors to final approach course.

NE-2, 11 JUN 2026 to 09 JUL 2026

NE-2, 11 JUN 2026 to 09 JUL 2026