

(BASYE.VADDR1) 25331

AL-289 (FAA)

LAGUARDIA (LGA)

# VADDR ONE ARRIVAL (RNAV) Arrival Routes

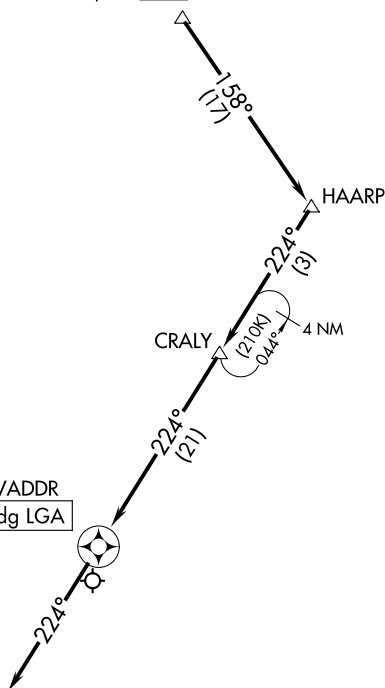
NEW YORK, NEW YORK

NEW YORK APP CON  
120.8 257.65  
D-ATIS ARR  
125.95

RNAV 1 - DME/DME/IRU or GPS.

RADAR required.

BASYE  
Jet Aircraft:  
Expect 8000



NOTE: STAR applicable to aircraft capable of operating at 250K or greater.

NOTE: VAAPE transition, ATC assigned only.

NOTE: Chart not to scale.

## ARRIVAL ROUTE DESCRIPTION

From BASYE on track 158° to HAARP, then on track 224° to CRALY, then on track 224° to VADDR, then on track 224°. Expect RADAR vectors to final approach course.

# VADDR ONE ARRIVAL (RNAV) Arrival Routes

(BASYE.VADDR1) 27NOV25

NEW YORK, NEW YORK

LAGUARDIA (LGA)

NE-2, 11 JUN 2026 to 09 JUL 2026

NE-2, 11 JUN 2026 to 09 JUL 2026