

NORFOLK, VIRGINIA

# ILS or LOC RWY 10

LOC I-NGU <b>108.95</b>	APCH CRS <b>101°</b>	Rwy Idg TDZE Arpt Elev <b>8071</b> <b>14</b> <b>15</b>
----------------------------	-------------------------	---

[USN]

NORFOLK NS (CHAMBERS FLD) (KNGU)

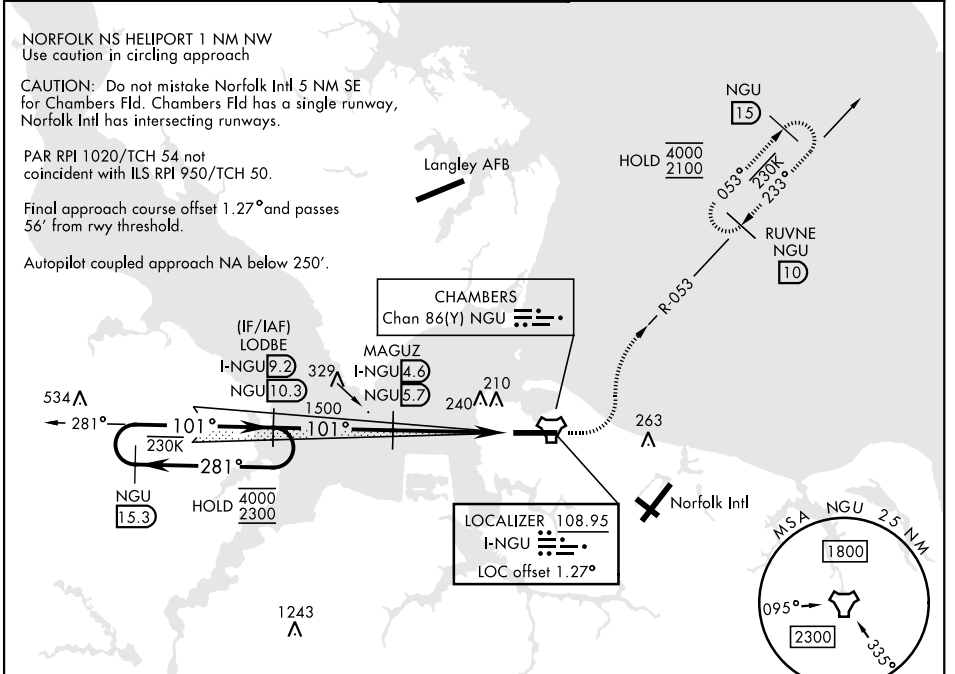
DME, TACAN required.

\* When ALS inop, increase vis to ¾ mile.  
 \*\* When ALS inop, increase CAT AB vis to 1 mile, CAT CDE vis to 1¾ miles.  
 \*\*\* Circling not authorized S of Rwy 10-28.

ALSF-2

MISSED APPROACH: Climb to 500, then climbing left turn to 2100, intercept NGU TACAN R-053 to RUVNE/10 DME and hold.

ATIS <b>118.425 338.225</b>	APP CON <b>118.9 273.475</b>	CHAMBERS TOWER <b>124.3 379.15</b>	GND CON <b>121.8 370.85</b>	ASR/PAR
--------------------------------	---------------------------------	---------------------------------------	--------------------------------	---------



EMERG SAFE ALT 100 NM 6100

VGSI and ILS glidepath not coincident (VGSI Angle 3.00/TCH 35).

LODBE  
 I-NGU 9.2  
 NGU