

TACAN Z RWY 28

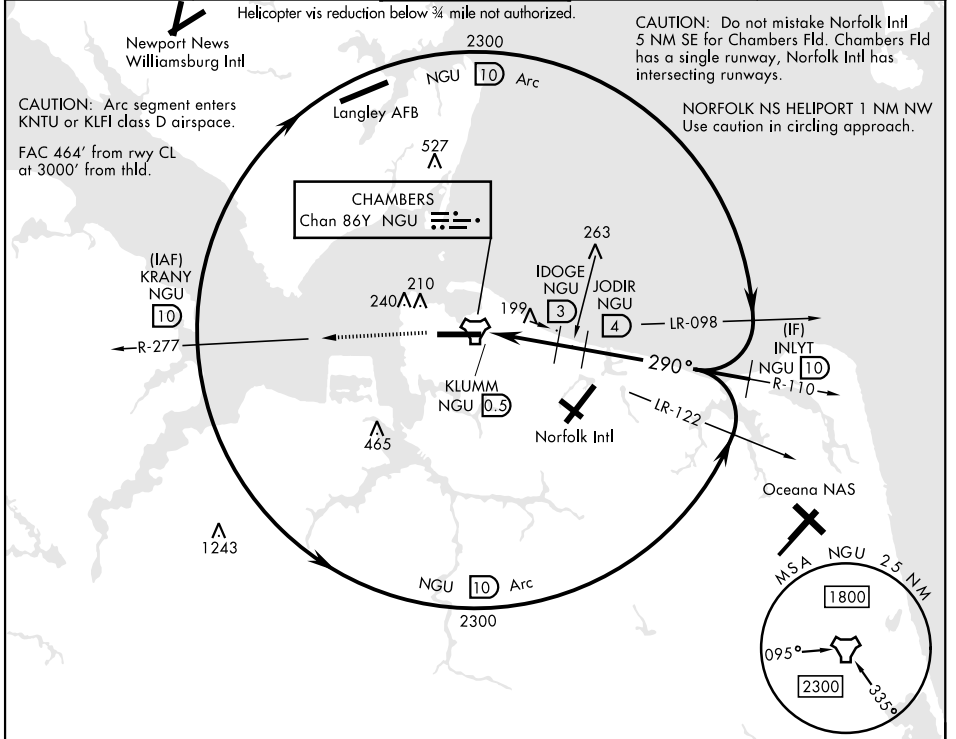
TACAN NGU Chan 86Y	APCH CRS 290°	Rwy Idg 7375 TDZE 14 Arprt Elev 15	[USN]	NORFOLK NS (CHAMBERS FLD) (KNGU)
------------------------------	-------------------------	---	-------	----------------------------------

RADAR required

▼ * When ALS inop, increase CAT AB vis to 1 mile, CAT CD vis to 1 3/8 miles.
 ** Circling not authorized S of Rwy 10-28.

MALSF MISSED APPROACH: Climb to 2300 on NGU TACAN R-277 then as directed by ATC.

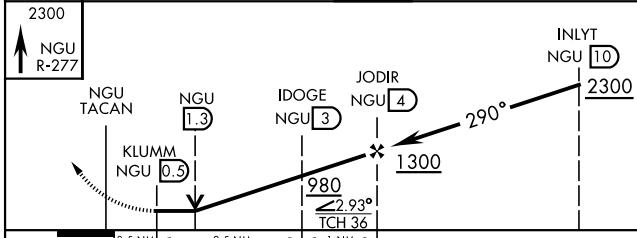
ATIS 118.425 338.225	APP CON 118.9 273.475	CHAMBERS TOWER 124.3 379.15	GND CON 121.8 370.85	ASR/PAR
--------------------------------	---------------------------------	---------------------------------------	--------------------------------	---------



NE-3, 11 JUN 2026 to 09 JUL 2026

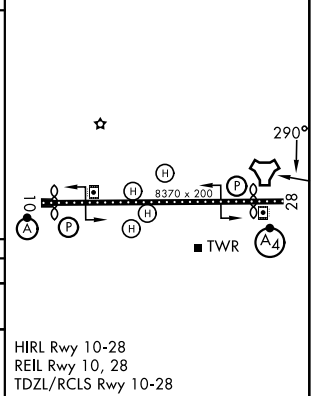
NE-3, 11 JUN 2026 to 09 JUL 2026

EMERG SAFE ALT 100 NM 6100



ELEV	15	TDZE	14
------	----	------	----

CATEGORY	A	B	C	D	E
S-28 *	460-3/4	446 (500-3/4)	460-1	446 (500-1)	
CIRCLING**	520-1 505 (600-1)	540-1 525 (600-1)	540-1 1/2 525 (600-1 1/2)	600-2	585 (600-2)



HIRL Rwy 10-28
 REIL Rwy 10, 28
 TDZL/RCLS Rwy 10-28

TACAN Z RWY 28