

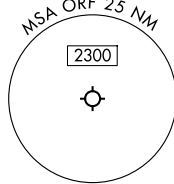
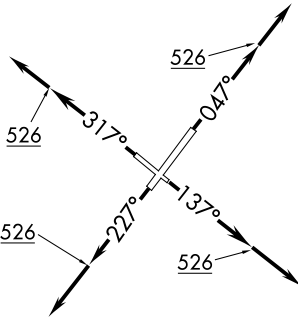
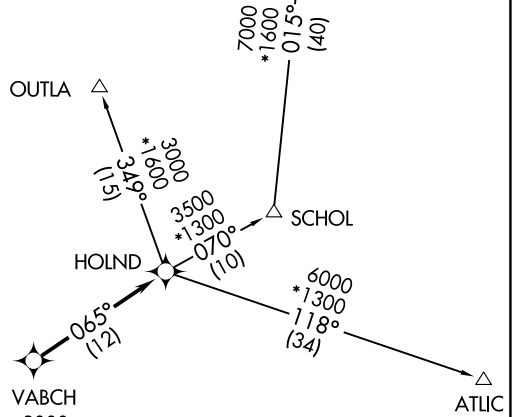
# HOLND ONE DEPARTURE (RNAV)

NORFOLK DEP CON  
125.2 363.125  
ATIS  
127.15  
CLNC DEL  
118.5  
GND CON  
121.9  
NORFOLK TOWER  
120.8 257.8

RNAV1 DME/DME/IRU or GPS.  
RADAR required.

**TOP ALTITUDE:  
4000**

KALDA



**TAKEOFF MINIMUMS:**  
Rwys 5, 14, 23, 32: Standard.

NOTE: OUTLA Transition for turboprops and props only.

NOTE: Chart not to scale.



## DEPARTURE ROUTE DESCRIPTION

**TAKEOFF RUNWAY 5:** Climb on heading 047° to 526, then on heading 047° or as assigned by ATC, for RADAR vectors to cross VABCH at or above 2000, thence....

**TAKEOFF RUNWAY 14:** Climb on heading 137° to 526, then on heading 137° or as assigned by ATC, for RADAR vectors to cross VABCH at or above 2000, thence....

**TAKEOFF RUNWAY 23:** Climb on heading 227° to 526, then on heading 227° or as assigned by ATC, for RADAR vectors to cross VABCH at or above 2000, thence....

**TAKEOFF RUNWAY 32:** Climb on heading 317° to 526, then on heading 317° or as assigned by ATC, for RADAR vectors to cross VABCH at or above 2000, thence....

....on track 065° to HOLND, then on assigned transition. Maintain 4000, expect filed altitude 10 minutes after departure.

ATLIC TRANSITION (HOLND1.ATLIC)

KALDA TRANSITION (HOLND1.KALDA)

OUTLA TRANSITION (HOLND1.OUTLA)

NE-3, 11 JUN 2026 to 09 JUL 2026

NE-3, 11 JUN 2026 to 09 JUL 2026