

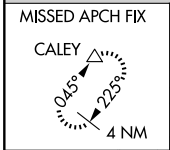
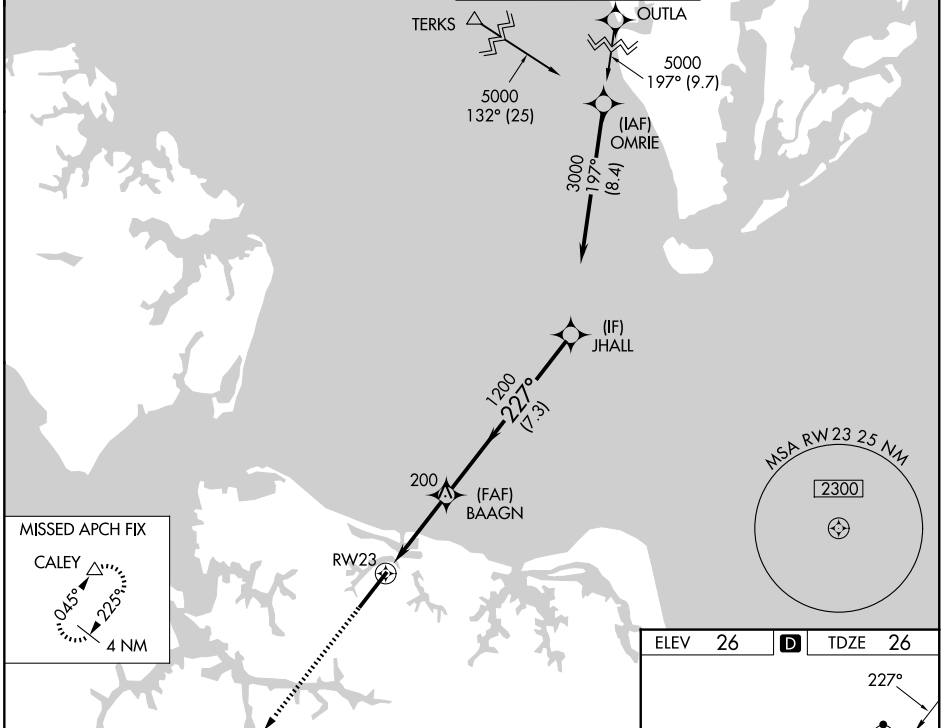
WAAS CH <b>56322</b> <b>W23A</b>	APP CRS <b>227°</b>	Rwy Ldg <b>8995</b> TDZE <b>26</b> Apt Elev <b>26</b>
--	------------------------	---

# RNAV (GPS) Z RWY 23

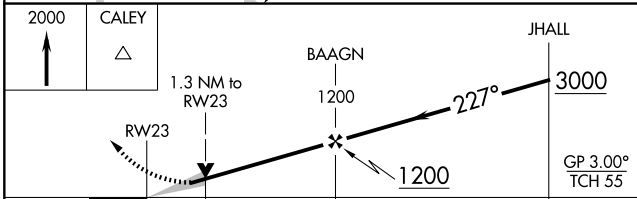
NORFOLK INTL (ORF)

RNP APCH - GPS.	MALSR	MISSED APPROACH: Climb to 2000 direct CALEY and hold.
<p><b>V</b> For uncompensated Baro-VNAV systems, LNAV/VNAV NA below -4°C or above 54°C. For inop ALS, increase LNAV/VNAV visibility all Cats to 1 SM.</p>		

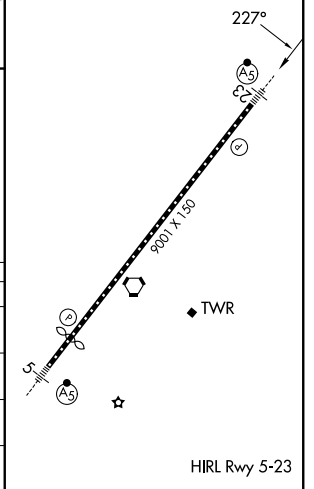
ATIS <b>127.15</b>	NORFOLK APP CON <b>118.9 353.7</b>	NORFOLK TOWER <b>120.8 257.8</b>	GND CON <b>121.9</b>
-----------------------	---------------------------------------	-------------------------------------	-------------------------



ELEV 26	<b>D</b>	TDZE 26
---------	----------	---------



CATEGORY	A	B	C	D
LPV DA		226- <sup>1</sup> / <sub>2</sub>	200 (200- <sup>1</sup> / <sub>2</sub> )	
LNAV/VNAV DA		403- <sup>5</sup> / <sub>8</sub>	377 (400- <sup>3</sup> / <sub>8</sub> )	
LNAV MDA	480- <sup>1</sup> / <sub>2</sub>	454 (500- <sup>1</sup> / <sub>2</sub> )	480- <sup>7</sup> / <sub>8</sub>	454 (500- <sup>7</sup> / <sub>8</sub> )
CIRCLING	480-1 454 (500-1)	540-1 514 (600-1)	540-1 <sup>1</sup> / <sub>2</sub> 514 (600-1 <sup>1</sup> / <sub>2</sub> )	900-2 <sup>3</sup> / <sub>4</sub> 874 (900-2 <sup>3</sup> / <sub>4</sub> )



NE-3, 11 JUN 2026 to 09 JUL 2026

NE-3, 11 JUN 2026 to 09 JUL 2026