


WAAS CH 50222 W05A	APP CRS 047°	Rwy Ldg TDZE Apt Elev	7809 26 27
--	------------------------	-----------------------------	---------------------------------------

RNAV (GPS) Z RWY 5

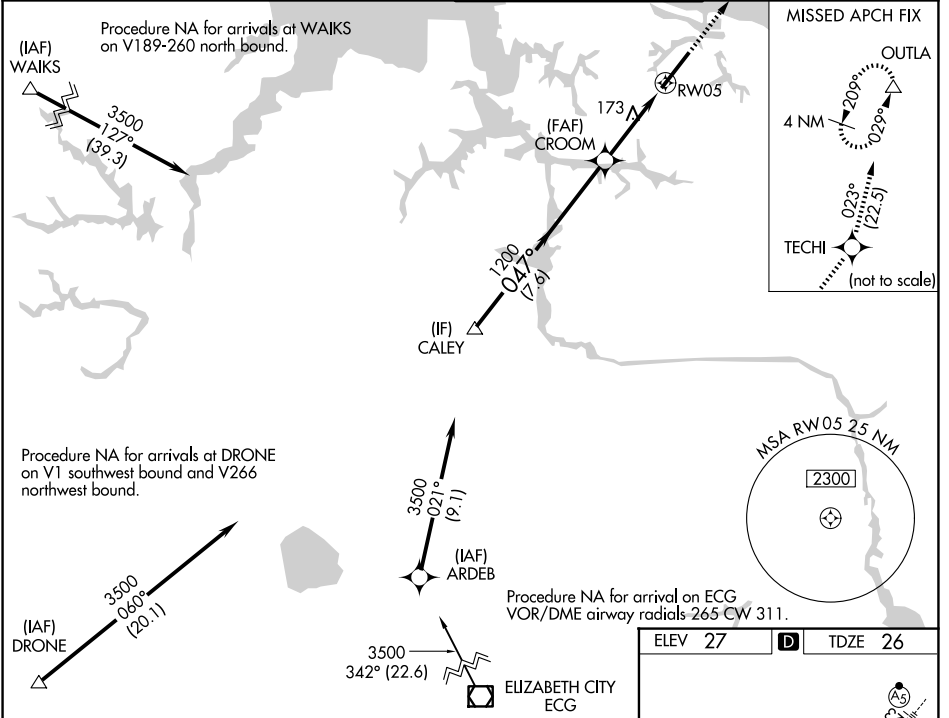
NORFOLK INTL (O.R.F.)

RNP APCH.

▼ For uncompensated Baro-VNAV systems, LNAV/VNAV NA below -9°C or above 54°C.
▲ For inop ALS, increase LNAV/VNAV all Cats visibility to RVR 4500 and LNAV Cats C and D visibility to RVR 6000. **RVR 1800 authorized with use of FD or AP or HUD to DA.

MALSR  MISSED APPROACH: Climb to 2000 direct TECHI then on track 023° to OUTLA and hold.

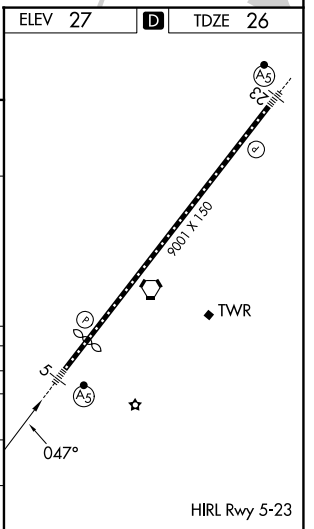
ATIS 127.15	NORFOLK APP CON 118.9 353.7	NORFOLK TOWER 120.8 257.8	GND CON 121.9
-----------------------	---------------------------------------	-------------------------------------	-------------------------



VGSI and RNAV glidepath not coincident (VGSI Angle 3.00/TCH 71).

CALEY	2000	TECHI	tr 023°	OUTLA
3500				
GP 3.00° TCH 56				
	7.6 NM	2.4 NM	1.1 NM	
CATEGORY	A	B	C	D
LPV DA**		226/24	200 (200-½)	
LNAV/VNAV DA		306/24	280 (300-½)	
LNAV MDA	440/24	414 (500-½)	440/40	414 (500-¾)
CIRCLING	480-1 453 (500-1)	540-1 513 (600-1)	540-1½ 513 (600-1½)	900-2¾ 873 (900-2¾)

* LNAV only.
 *1.1 NM to RW05



NE-3, 11 JUN 2026 to 09 JUL 2026

NE-3, 11 JUN 2026 to 09 JUL 2026