

CNDEL FIVE DEPARTURE (RNAV)

NORCAL DEP CON
 135.1 307.2
 D-ATIS 133.775
 CLNC DEL 121.1
 CPDLC
 GND CON
 121.9 (Rwys 10L/R, 28L/28R, 15/33)
 121.75 (Rwy 12/30)
 OAKLAND TOWER
 118.3 291.65 (Rwys 10L/R, 28L/28R, 15/33)
 127.2 256.9 (Rwy 12/30)

TOP ALTITUDE:
10000

DEPARTURE ROUTE DESCRIPTION

TAKEOFF RUNWAYS 28L, 28R: Climb on heading 278° to 520, then direct to cross LEJAY at or below 2000, then on track 296° to CNDEL, then left turn direct to cross PORTE at or below 10000. Thence. . . .

TAKEOFF RUNWAY 30: Climb on heading 296° to 520, then direct to cross LEJAY at or below 2000, then on track 296° to CNDEL, then left turn direct to cross PORTE at or below 10000. Thence. . . .

. . . . on (transition). Maintain 10000, expect filed altitude 10 minutes after departure.

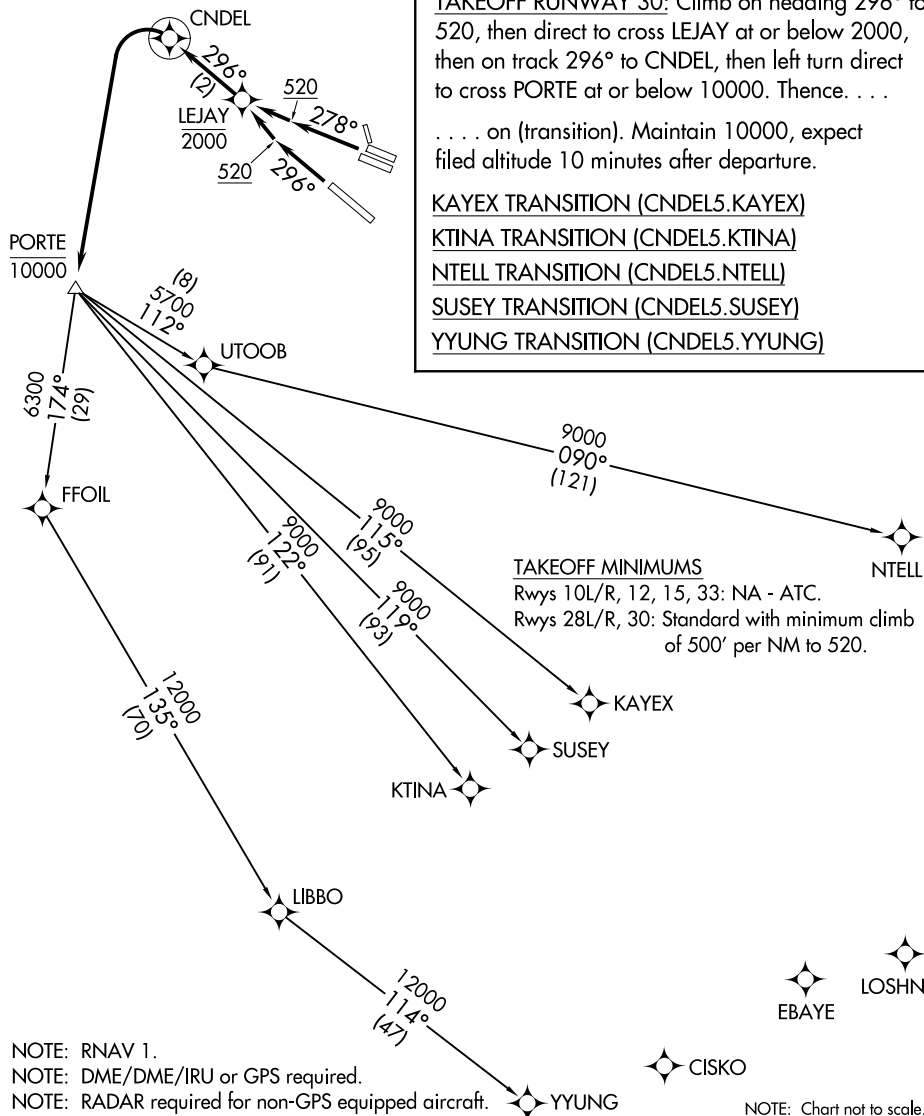
KAYEX TRANSITION (CNDEL5.KAYEX)

KTINA TRANSITION (CNDEL5.KTINA)

NTELL TRANSITION (CNDEL5.NTELL)

SUSEY TRANSITION (CNDEL5.SUSEY)

YYUNG TRANSITION (CNDEL5.YYUNG)



NOTE: RNAV 1.
 NOTE: DME/DME/IRU or GPS required.
 NOTE: RADAR required for non-GPS equipped aircraft.

NOTE: Chart not to scale.

CNDEL FIVE DEPARTURE (RNAV)

SW-2, 11 JUN 2026 to 09 JUL 2026

SW-2, 11 JUN 2026 to 09 JUL 2026