

| | | |
|---------------------------|------------------------|-------------------------|
| LOC I-AAZ 111.9 | APP CRS 116° | Rwy Ldg 10000 |
| | TDZE 9 | |
| | Apt Elev 9 | |

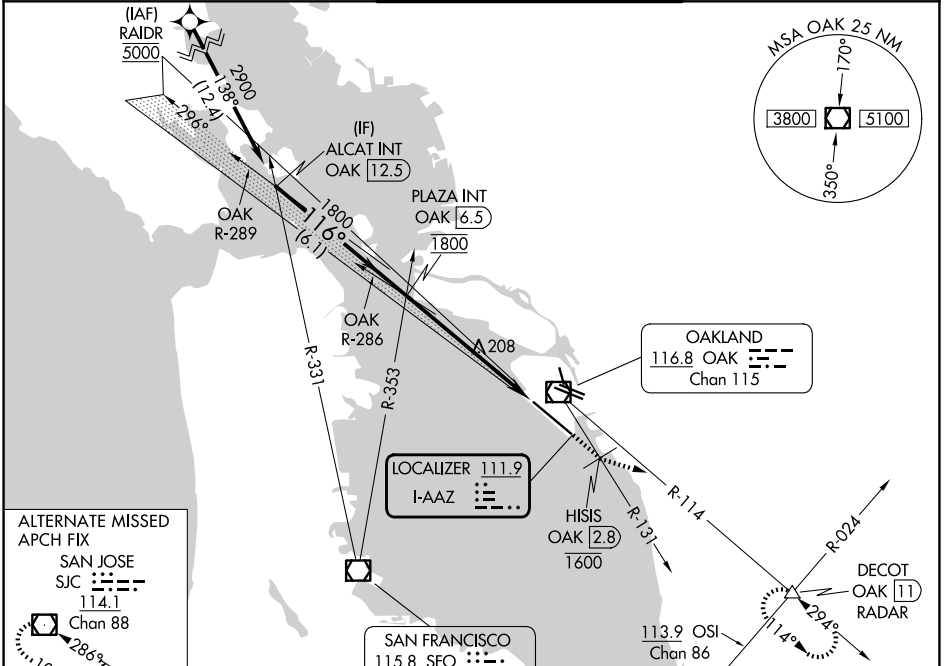
ILS RWY 12 (SA CAT I)

OAKLAND SAN FRANCISCO BAY (OAK)

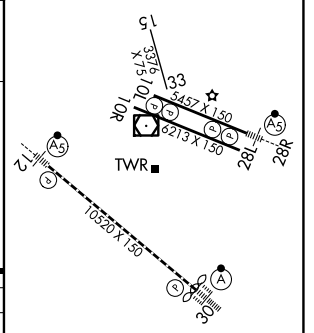
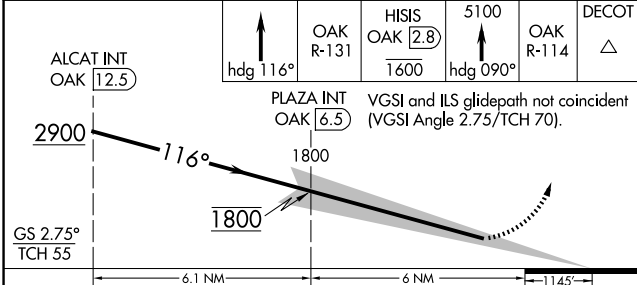
DME required. From RAIDR: RNAV 1-GPS required. **MALSR** MISSED APPROACH: Climb on heading 116° and on OAK VOR/DME R-131 to cross HISIS/OAK 2.8 DME at or below 1600 then climb to 5100 on heading 090° and on OAK VOR/DME R-114 to DECOT INT/OAK 11 DME/RADAR and hold, continue climb-in-hold to 5100.

⚠ Requires specific OPSPEC, MSPEC, or LOA approval and use of HUD to DH.

| | | | |
|--------------------------|--|---|---|
| D-ATIS 133.775 | NORCAL APP CON 125.35 263.15 | OAKLAND TOWER 118.3 291.65 (10L/R-28L/R, 15-33) 127.2 256.9 (12-30) | GND CON 121.9 (10L/R-28L/R, 15-33) 121.75 (12-30) |
|--------------------------|--|---|---|



| | |
|--------|-----------------|
| ELEV 9 | D TDZE 9 |
|--------|-----------------|



| | | | | |
|----------|----------------------|---|---|---|
| CATEGORY | A | B | C | D |
| S-ILS 12 | RA 153/14 150 DA 159 | | | |

SA CATEGORY I ILS - SPECIAL AIRCREW & AIRCRAFT CERTIFICATION REQUIRED

REIL Rwy 10R
TDZ/CL Rwy 30
MIRL Rwy 15-33
HIRL Rwy 12-30, 10L-28R, 10R-28L

SW-2, 11 JUN 2026 to 09 JUL 2026

SW-2, 11 JUN 2026 to 09 JUL 2026