

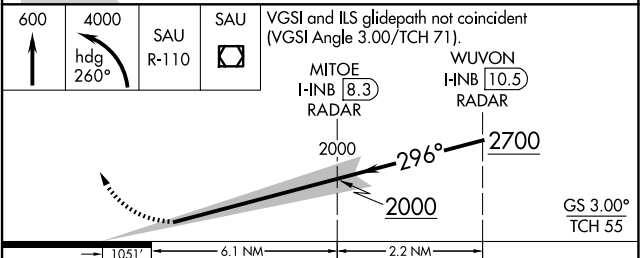
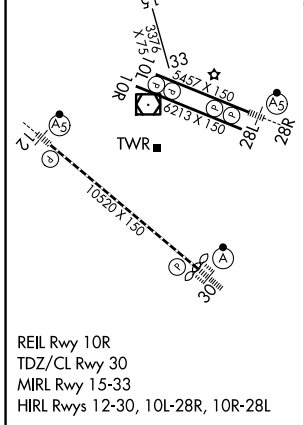
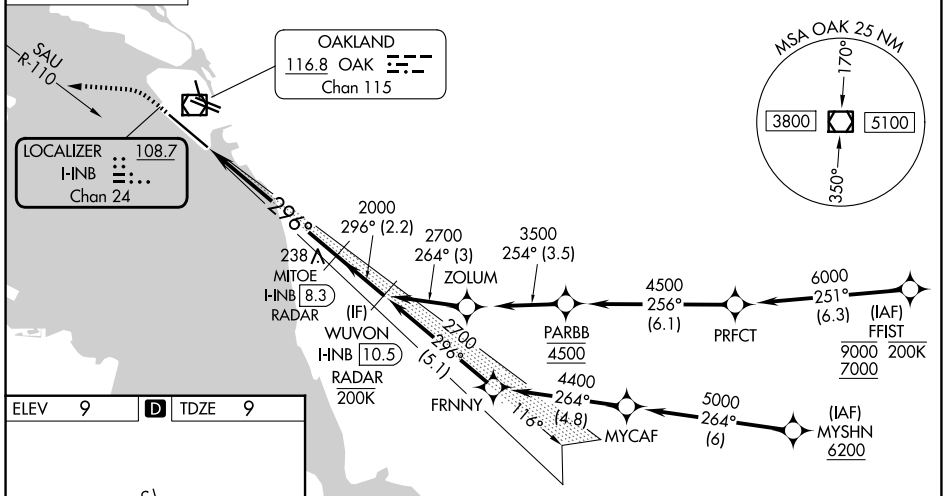
LOC/DME I-INB 108.7 Chan 24	APP CRS 296°	Rwy Ldg TDZE Apt Elev 10000 9 9
--	------------------------	---

ILS RWY 30 (CAT II & III)

OAKLAND SAN FRANCISCO BAY (OAK)

RNP APCH - GPS. From FFIST or MYSHN.	ALSF-2 	MISSED APPROACH: Climb to 600 then climbing left turn to 4000 on heading 260° and on SAU VOR/DME R-110 to SAU VOR/DME and hold, continue climb-in-hold to 4000.
DME or RADAR required.		
<p>▼ Missed approach requires minimum climb of 213 feet per NM to 1540, if unable to meet climb gradient, see ILS or LOC RWY 30. CAT II: RVR 1000 authorized with specific OPSPEC, MSPEC, or LOA approval and use of autoland or HUD to touchdown.</p>		

D-ATIS 133.775	NORCAL APP CON 125.35 263.15	OAKLAND TOWER 118.3 291.65 (10L/R-28L/R, 15-33) 127.2 256.9 (12-30)	GND CON 121.9 (10L/R-28L/R, 15-33) 121.75 (12-30)
--------------------------	--	---	---



600	4000	SAU R-110	SAU	1051'	6.1 NM	2.2 NM
<p>↑ hdg 260°</p>		<p>WUVON I-INB 8.3 RADAR</p>		<p>2000 296° 2700</p>		
CATEGORY	A	B	C	D		
S-ILS 30	CAT II RA 100/12 100 DA 109					
S-ILS 30	CAT III RVR 06					

CATEGORY II & III ILS - SPECIAL AIRCREW & AIRCRAFT CERTIFICATION REQUIRED

SW-2, 11 JUN 2026 to 09 JUL 2026

SW-2, 11 JUN 2026 to 09 JUL 2026