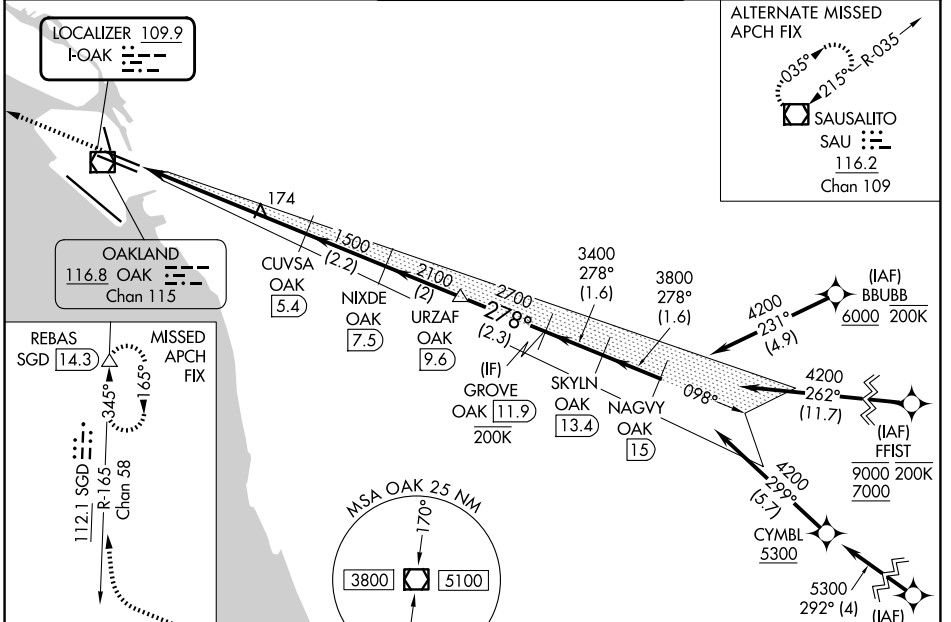


LOC I-OAK <b>109.9</b>	APP CRS <b>278°</b>	Rwy Ldg 28R 28L	5457 6213
		TDZE	7 9
		Apt Elev	9 9

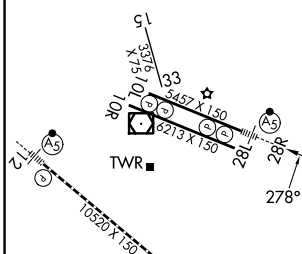
# ILS or LOC RWY 28R

OAKLAND SAN FRANCISCO BAY (OAK)

RNP APCH - GPS. From BBUBB or FFI1T or MYSHN.		MALSR Rwy 28R	MISSED APPROACH: Climb to 1900 then climbing right turn to 3000 on heading 340° and SGD VORTAC R-165 to REBAS/SGD 14.3 DME and hold.
DME required.			
▼ DME from OAK VOR/DME. Simultaneous reception of I-OAK and OAK DME required. ▲ *RVR 1800 authorized with use of FD or AP or HUD to DA.			
D-ATIS <b>133.775</b>	NORCAL APP CON <b>125.35 263.15</b>	OAKLAND TOWER <b>118.3 291.65</b> (10L/R-28L/R, 15-33) <b>127.2 256.9</b> (12-30)	GND CON <b>121.9</b> (10L/R-28L/R, 15-33) <b>121.75</b> (12-30)



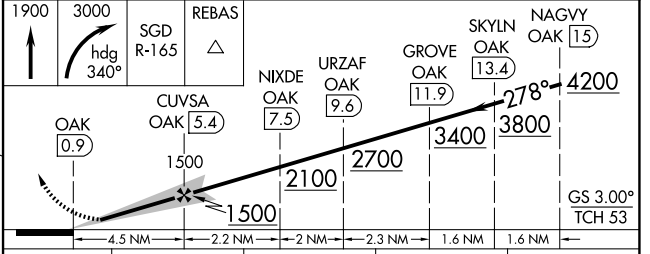
ELEV	9	D	TDZE 28R	7
			TDZE 28L	9



REIL Rwy 10R  
TDZ/CL Rwy 30  
MIRL Rwy 15-33  
HIRL Rwys 12-30, 10L-28R, 10R-28L

FAF to MAP 4.5 NM

Knots	60	90	120	150	180
Min:Sec	4:30	3:00	2:15	1:48	1:30



CATEGORY	A	B	C	D
S-ILS 28R*	207/24 200 (200-1/2)			
S-LOC 28R	440/24	433 (500-1/2)	440/40	433 (500-3/4)
SIDESTEP 28L	440-1	431 (500-1)	440-1 1/2	431 (500-2)
CIRCLING	560-1	551 (600-1)	660-1 3/4	1400-3

SW-2, 11 JUN 2026 to 09 JUL 2026

SW-2, 11 JUN 2026 to 09 JUL 2026