

(KATFH3.KATFH) 25275

KATFH THREE DEPARTURE(RNAV)

AL-294 (FAA)

OAKLAND SAN FRANCISCO BAY (OAK)
OAKLAND, CALIFORNIA

D-ATIS 133.775
CLNC DEL
121.1
CPDLC
GND CON
121.9 (Rwys 10L/R, 28L/28R, 15/33)
121.75 (Rwy 12/30)
OAKLAND TOWER
118.3 291.65 (Rwys 10L/R, 28L/28R, 15/33)
127.2 256.9 (Rwy 12/30)
NORCAL DEP CON
135.1 307.2

**TOP ALTITUDE:
ASSIGNED BY ATC**



DEPARTURE ROUTE DESCRIPTION

TAKEOFF RUNWAYS 10L, 10R: Climb on heading 098° to 520, then right turn direct to cross ROWLY at or below 3000, then on track 150° to cross VYYDA at or below 4000, then on track 150° to cross KATFH at or above 6000. Thence. . . .

TAKEOFF RUNWAY 12: Climb on heading 116° to 520, then direct to cross ROWLY at or below 3000, then on track 150° to cross VYYDA at or below 4000, then on track 150° to cross KATFH at or above 6000. Thence. . . .

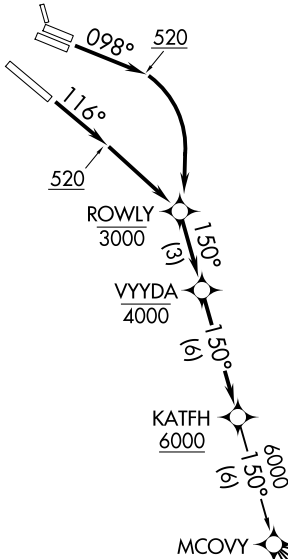
. . . .on (transition). Maintain ATC assigned altitude, expect filed altitude 10 minutes after departure.

KAYEX TRANSITION (KATFH3.KAYEX)

KTINA TRANSITION (KATFH3.KTINA)

NTELL TRANSITION (KATFH3.NTELL)

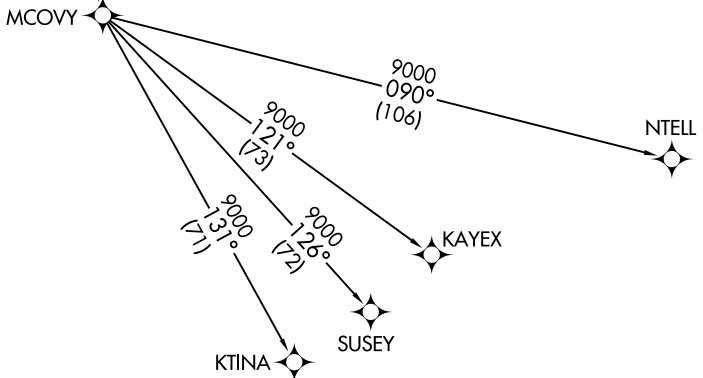
SUSEY TRANSITION (KATFH3.SUSEY)



TAKEOFF MINIMUMS

Rwys 15, 28L/R, 30, 33: NA-ATC.

Rwys 10L/R, 12: Standard with minimum climb of 500' per NM to 520.



NOTE: RNAV 1.
NOTE: DME/DME/IRU or GPS required.
NOTE: RADAR required for non-GPS equipped aircraft.



NOTE: Chart not to scale.

KATFH THREE DEPARTURE(RNAV)

(KATFH3.KATFH) 12AUG21

OAKLAND, CALIFORNIA
OAKLAND SAN FRANCISCO BAY (OAK)

SW-2, 11 JUN 2026 to 09 JUL 2026

SW-2, 11 JUN 2026 to 09 JUL 2026