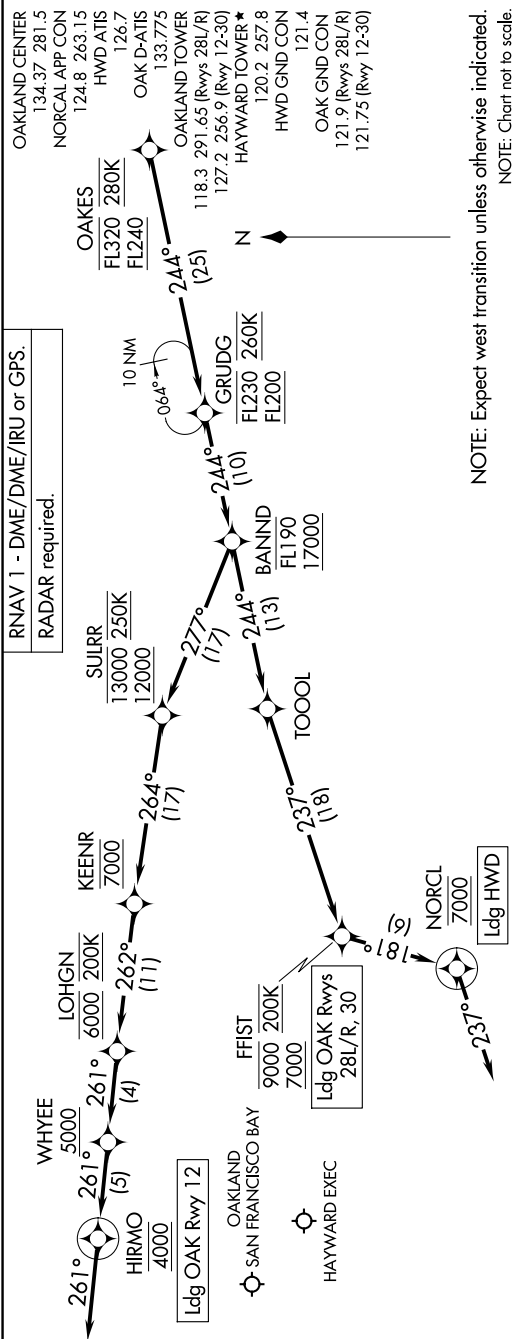


OAKES THREE ARRIVAL (RNAV) Arrival Routes

9202 2101 60 01 9202 N011 11 2-MS



ARRIVAL ROUTE DESCRIPTION

OAK: From OAKES on track 244° to cross GRUDDG between FL200 and FL230 and at 260K, then on track 244° to cross BANNND between 17000 and FL190.

LANDING OAK RUNWAY 12: From BANNND on track 277° to cross SUILRR between 12000 and 13000 and at 250K, then on track 264° to cross KEENR at 7000, then on track 262° to cross LOHGN at 6000 and at 200K, then on track 261° to cross WHYEE at or above 5000, then on track 261° to cross HIRMO at 4000, then on track 261°. Expect RNAV (RNP) Z RWY 12 approach or RADAR vectors to final approach course.

LANDING OAK RUNWAYS 28L/R, 30: From BANNND on track 244° to TOOOOL, then on track 237° to cross FFIIST between 7000 and 9000 and at 200K. Expect ILS or RNAV approach Rwy 28L/R, 30 approach.

LANDING HWD: From OAKES on track 244° to cross GRUDDG between FL200 and FL230 and at 260K, then on track 244° to cross BANNND between 17000 and FL190, then on track 244° to cross TOOOOL, then on track 237° to cross FFIIST between 7000 and 9000 and at 200K, then on track 181° to cross NORCL at 7000, then on track 237°. Expect RADAR vectors to final approach course.

SW-2, 11 JUN 2026 to 09 JUL 2026