

APP CRS	Rwy Ldg 10000
116°	TDZE 9
	Apt Elev 9

RNAV (RNP) Z RWY 12

OAKLAND SAN FRANCISCO BAY (OAK)

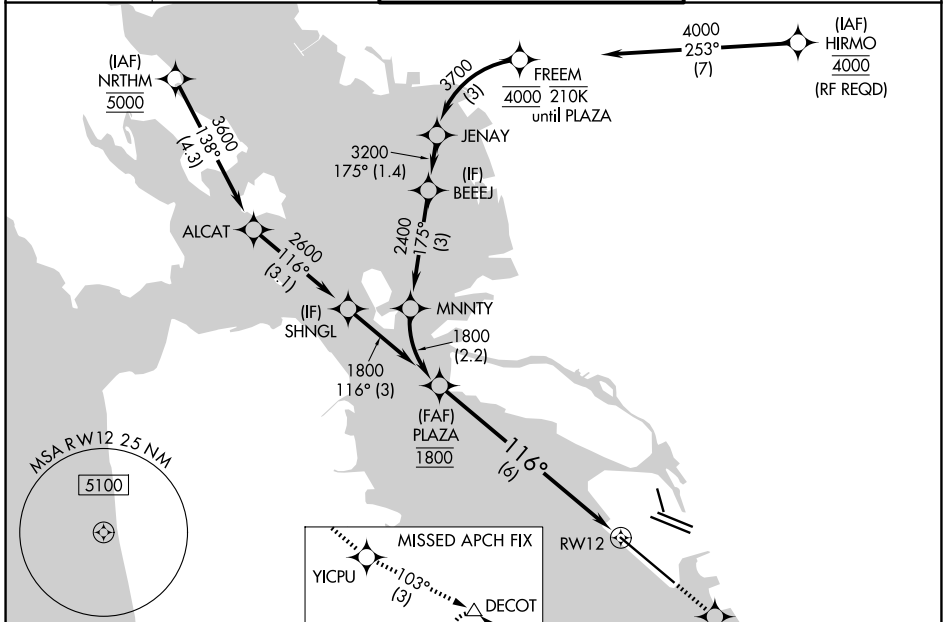
RNP AR APCH.

For uncompensated Baro-VNAV systems, procedure NA below 0°C or above 54°C. For inop ALS increase RNP 0.15 visibility all Cats to RVR 4500, RNP 0.30 visibility all Cats to RVR 5500.

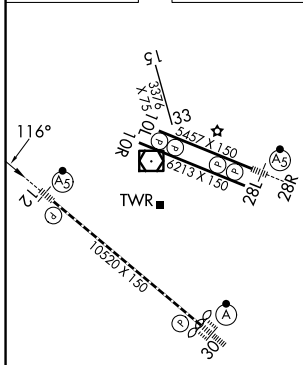
MALSR

MISSED APPROACH: Climb direct HISIS to cross HISIS at or below 1600 then climb to 5400 on track 116° to YICPU and on track 103° to DECOT and hold, continue climb-in-hold to 5400.

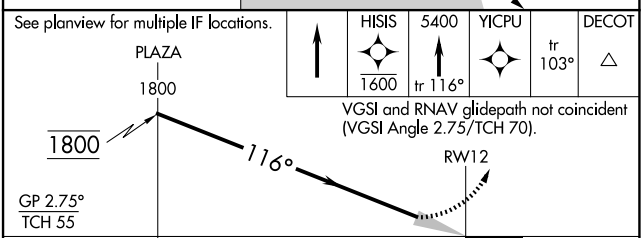
D-ATIS 133.775	NORCAL APP CON 125.35 263.15	OAKLAND TOWER 118.3 291.65 (10L/R-28L/R, 15-33) 127.2 256.9 (12-30)	GND CON 121.9 (10L/R-28L/R, 15-33) 121.75 (12-30)
--------------------------	--	---	---



ELEV 9	D	TDZE 9
--------	----------	--------



REIL Rwy 10R
TDZ/CL Rwy 30
MIRL Rwy 15-33
HIRL Rwys 12-30, 10L-28R, 10R-28L



GP 2.75° TCH 55				
CATEGORY	A	B	C	D
RNP 0.15 DA	289/24 280 (300-½)			
RNP 0.30 DA	386/35 377 (400-⅔)			

AUTHORIZATION REQUIRED

SW-2, 11 JUN 2026 to 09 JUL 2026

SW-2, 11 JUN 2026 to 09 JUL 2026