

APP CRS	Rwy Ldg	5457
278°	TDZE	7
	Apt Elev	9

RNAV (RNP) Z RWY 28R

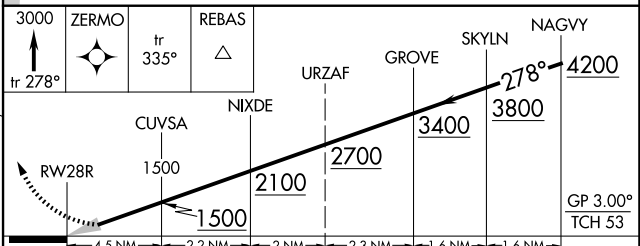
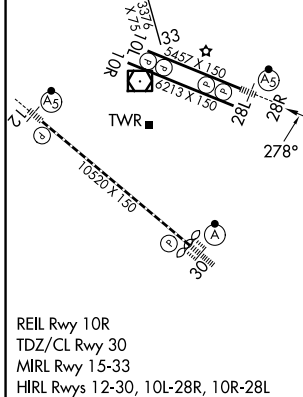
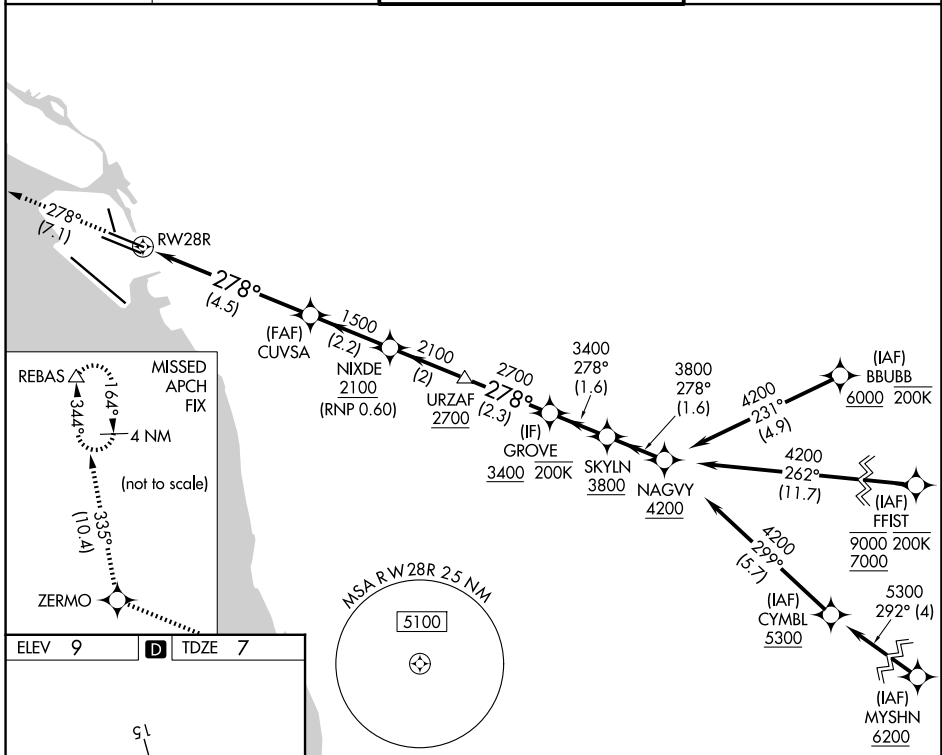
OAKLAND SAN FRANCISCO BAY (OAK)

RNP AR APCH - GPS. Authorization required.
 ▼ For uncompensated Baro-VNAV systems, procedure NA below 2°C or above 54°C. For inop ALS, increase RNP 0.30 all Cats visibility to RVR 6000.



MISSED APPROACH: Climb to 3000 on 278° track to ZERMO and on 335° track to REBAS and hold.

D-ATIS 133.775	NORCAL APP CON 125.35 263.15	OAKLAND TOWER 118.3 291.65 (10L/R-28L/R, 15-33) 127.2 256.9 (12-30)	GND CON 121.9 (10L/R-28L/R, 15-33) 121.75 (12-30)
--------------------------	--	---	---



CATEGORY	A	B	C	D
RNP 0.10 DA		332/26	325 (400-½)	
RNP 0.30 DA		418/40	411 (500-¾)	

AUTHORIZATION REQUIRED

SW-2, 11 JUN 2026 to 09 JUL 2026

SW-2, 11 JUN 2026 to 09 JUL 2026