

APP CRS	Rwy Ldg	<b>10000</b>
<b>296°</b>	TDZE	<b>9</b>
	Apt Elev	<b>9</b>

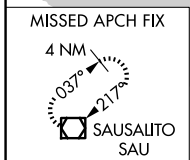
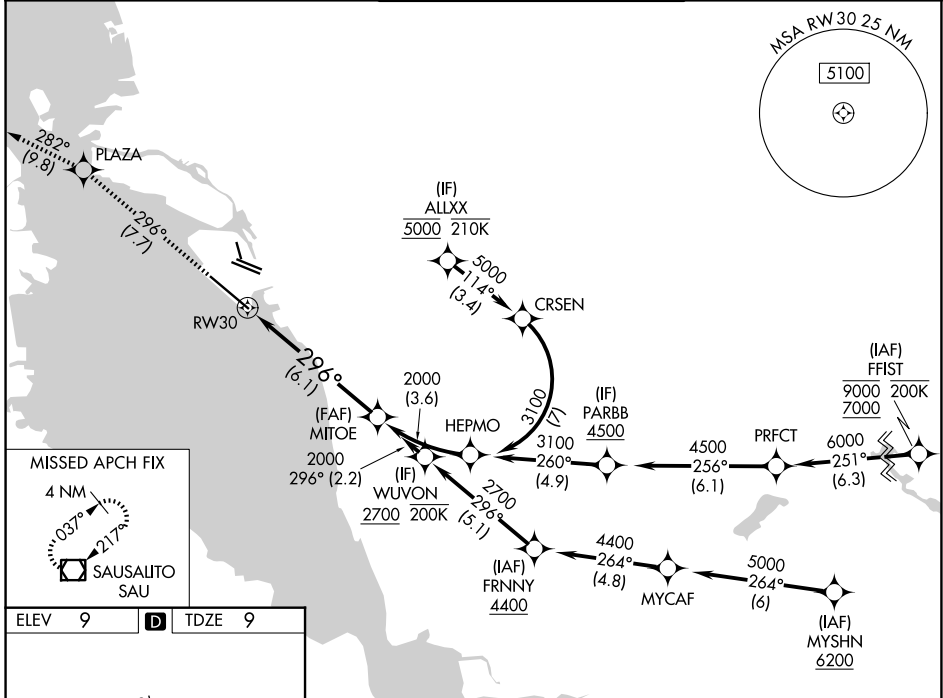
# RNAV (RNP) Z RWY 30

OAKLAND SAN FRANCISCO BAY (OAK)

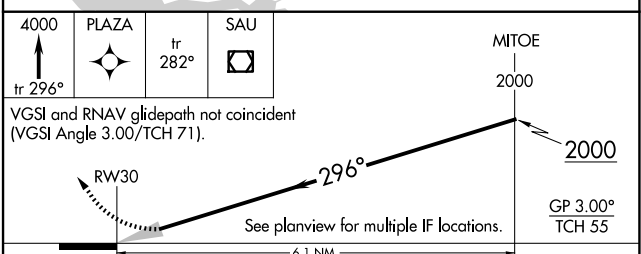
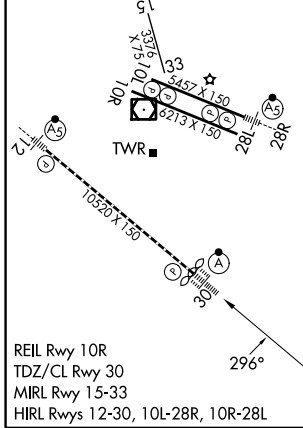
RNP AR APCH - GPS. Authorization required. From ALLXX or PARBB: RF.  
 RADAR required.  
 For uncompensated Baro-VNAV systems, procedure NA below 2°C or above 54°C. For inop ALS, increase RNP 0.15 all Cnts visibility to RVR 4500 and increase RNP 0.30 all Cnts visibility to RVR 5500.

ALSf-2  
 MISSED APPROACH: Climb to 4000 on track 296° to PLAZA and on track 282° to SAU VOR/DME and hold, continue climb-in-hold to 4000.

D-ATIS <b>133.775</b>	NORCAL APP CON <b>125.35 263.15</b>	OAKLAND TOWER <b>118.3 291.65</b> (10L/R-28L/R, 15-33) <b>127.2 256.9</b> (12-30)	GND CON <b>121.9</b> (10L/R-28L/R, 15-33) <b>121.75</b> (12-30)
--------------------------	--	---	---



ELEV 9	<b>D</b>	TDZE 9
--------	----------	--------



CATEGORY	A	B	C	D
RNP 0.15 DA		281/24	272 (300-½)	
RNP 0.30 DA		385/35	376 (400-¾)	

## AUTHORIZATION REQUIRED

SW-2, 11 JUN 2026 to 09 JUL 2026

SW-2, 11 JUN 2026 to 09 JUL 2026