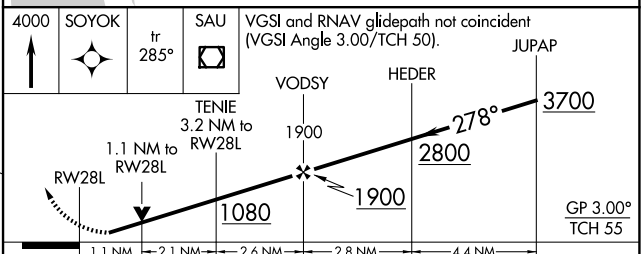
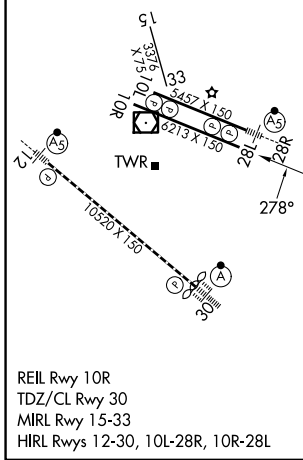
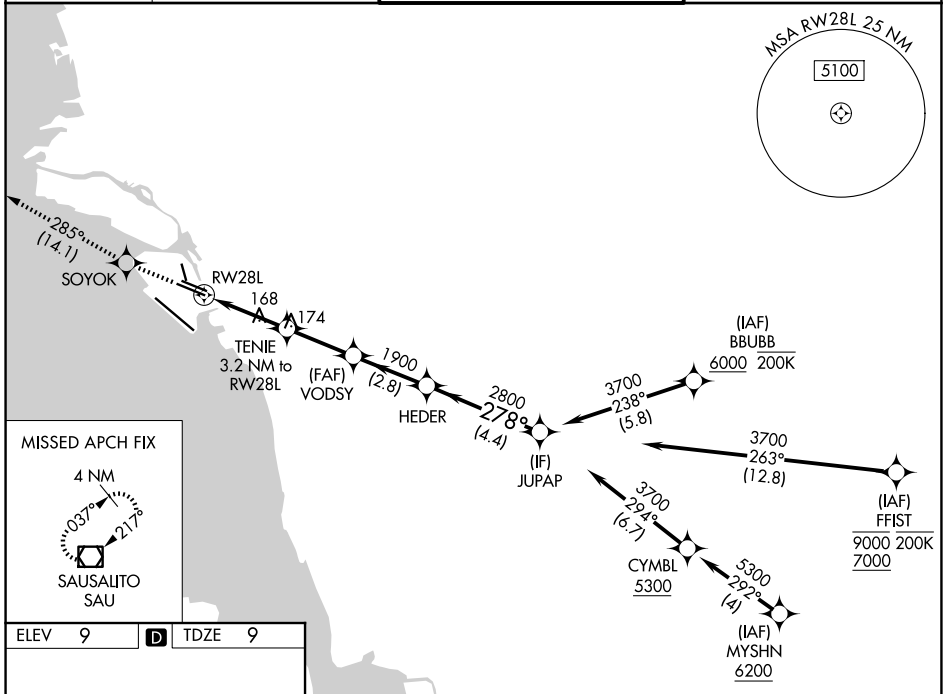


WAAS CH <b>72700</b> <b>W28A</b>	APP CRS <b>278°</b>	Rwy Ldg TDZE Apt Elev	<b>6213</b> <b>9</b> <b>9</b>
--	------------------------	-----------------------------	-------------------------------------

# RNAV (GPS) Y RWY 28L

OAKLAND SAN FRANCISCO BAY (OAK)

RNP APCH - GPS.		OAKLAND TOWER		GND CON	
▼ Rwy 28L helicopter visibility reduction below RVR 4000 NA. ▲ For uncompensated Baro-VNAV systems, LNAV/VNAV NA below 2°C or above 54°C.		MISSED APPROACH: Climb to 4000 direct SOYOK and on track 285° to SAU VOR/DME and hold, continue climb-in-hold to 4000.			
D-ATIS <b>133.775</b>	NORCAL APP CON <b>125.35 263.15</b>	<b>118.3 291.65</b> (10L/R-28L/R, 15-33) <b>127.2 256.9</b> (12-30)		<b>121.9</b> (10L/R-28L/R, 15-33) <b>121.75</b> (12-30)	



CATEGORY	A	B	C	D
LPV DA		259/40	250 (300-¾)	
LNAV/VNAV DA		387/55	378 (400-1)	
LNAV MDA	420/55	411 (500-1)	420/60	411 (500-1¼)
CIRCLING	560-1	551 (600-1)	660-1¾ 651 (700-1¾)	1400-3 1391 (1400-3)

SW-2, 11 JUN 2026 to 09 JUL 2026

SW-2, 11 JUN 2026 to 09 JUL 2026