

WAAS CH 93535 W30A	APP CRS 296°	Rwy Ldg 10000 TDZE 9 Apt Elev 9
--	------------------------	--

RNAV (GPS) Y RWY 30

OAKLAND SAN FRANCISCO BAY (OAK)

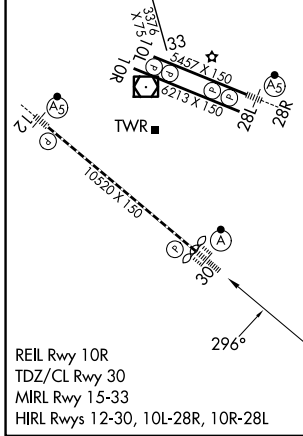
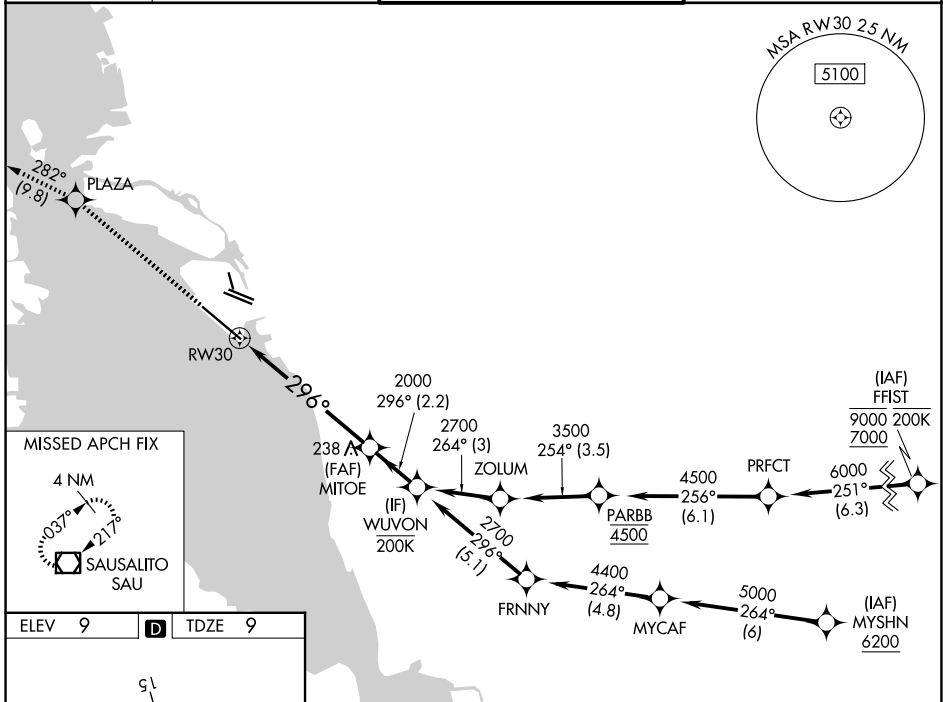
RNP APCH - GPS.

⚠ For uncompensated Baro-VNAV systems, LNAV/VNAV NA below 2°C or above 54°C. For inop ALS, increase LNAV/VNAV Cats A/B/C visibility to RVR 4000, Cat D visibility to RVR 4500, and LNAV Cats C/D visibility to 1 3/8 SM.

ALSf-2

⚠ MISSED APPROACH: Climb to 4000 direct PLAZA and on track 282° to SAU VOR/DME and hold, continue climb-in-hold to 4000.

D-ATIS 133.775	NORCAL APP CON 125.35 263.15	OAKLAND TOWER 118.3 291.65 (10L/R-28L/R, 15-33) 127.2 256.9 (12-30)	GND CON 121.9 (10L/R-28L/R, 15-33) 121.75 (12-30)
--------------------------	--	---	---



4000	PLAZA	tr 282°	SAU	VGSI and RNAV glidepath not coincident (VGSI Angle 3.00/TCH 71).	WUVON
					MITOE 2000
					2700
					2000
					GP 3.00° TCH 55
					1.3 NM
					4.8 NM
					2.2 NM
CATEGORY	A	B	C	D	
LPV DA	209/18				200 (200-1/2)
LNAV/VNAV DA	259/24	250 (300-1/2)	265/24	283/24	274 (300-1/2)
LNAV MDA	500/24	491 (500-1/2)	500/50	491 (500-1)	
CIRCLING	560-1	551 (600-1)	660-1 3/4	1400-3	651 (700-1 3/4) 1391 (1400-3)

SW-2, 11 JUN 2026 to 09 JUL 2026

SW-2, 11 JUN 2026 to 09 JUL 2026