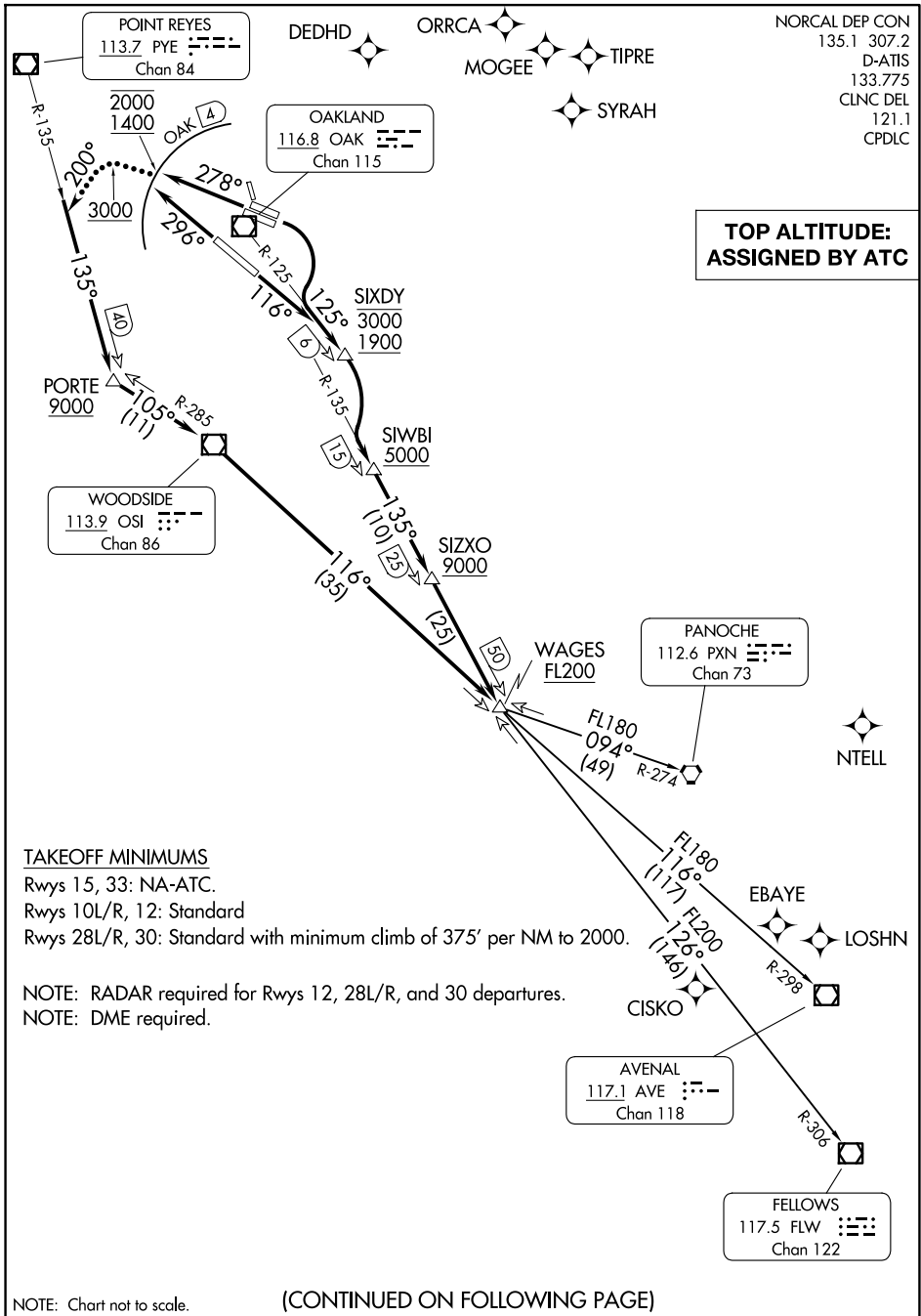


SKYLINE ONE DEPARTURE

OAKLAND SAN FRANCISCO BAY (OAK)

OAKLAND, CALIFORNIA

AL-294 (FAA)



**TOP ALTITUDE:
ASSIGNED BY ATC**

TAKEOFF MINIMUMS

Rwys 15, 33: NA-ATC.

Rwys 10L/R, 12: Standard

Rwys 28L/R, 30: Standard with minimum climb of 375' per NM to 2000.

NOTE: RADAR required for Rwys 12, 28L/R, and 30 departures.

NOTE: DME required.

NOTE: Chart not to scale.

(CONTINUED ON FOLLOWING PAGE)

SW-2, 11 JUN 2026 to 09 JUL 2026

SW-2, 11 JUN 2026 to 09 JUL 2026

SKYLINE ONE DEPARTURE

OAKLAND, CALIFORNIA

OAKLAND SAN FRANCISCO BAY (OAK)