

OGDEN, UTAH

HI-ILS or LOC Y RWY 14

LOC I-HIF 109.9	APCH CRS 139°	Rwy ldg 13,500
		TDZE 4786
		Arpt Elev 4789

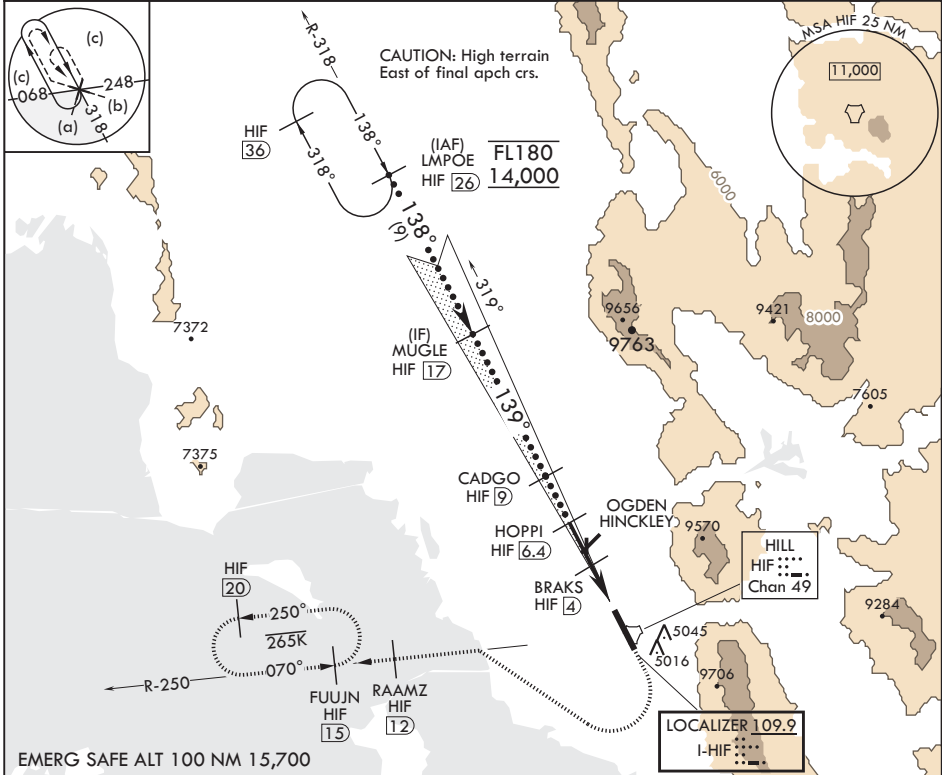
JAL-296 (USAF)

HILL AFB (KHIF)

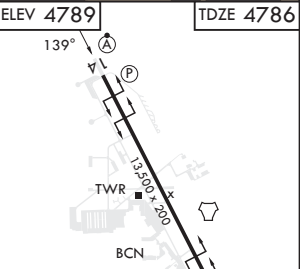
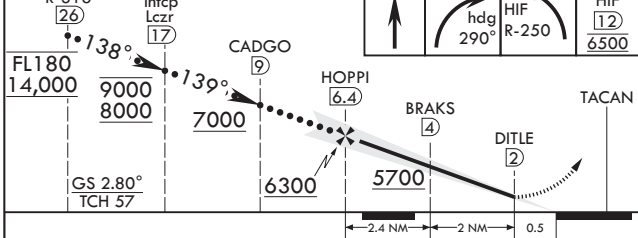
⚠ * When ALS inop, increase RVR to 40, and vis to 3/4 mile.
 ** When ALS inop, increase RVR to 55, and vis to 1 mile.
 *** Circling not authorized NE of Rwy 14-32.

ALSF-2 MISSED APPROACH: Climb to 5300, then turn right heading 290°, remain within HIF TACAN 5.7 DME until established on 290° hdg. Intercept the HIF R-250 outbd. Cross RAAMZ at 6500, then climb and maintain 7200 direct to FUJUN and hold.

ATIS 134.925 397.9	SALT LAKE CITY APP CON 121.1 319.25	TOWER 127.15 263.15	GND CON 121.6 275.8	CLNC DEL 124.1 335.8
------------------------------	---	-------------------------------	-------------------------------	--------------------------------



EMERG SAFE ALT 100 NM 15,700



CATEGORY	C	D	E
S-ILS 14*	4986/24	200	(200-1/2)
S-LOC 14**	5080/24	294	(300-1/2)
C CIRCLING***	5280-1 1/2 491 (500-1 1/2)	5340-2 551 (600-2)	5900-3 1111 (1200-3)

Approach lights
Rwy 14 2400'
REIL all Rwys
HIRL all Rwys

FAF to MAP 4.4 NM					
Knots	120	140	160	180	200
Min:Sec	2:12	1:53	1:39	1:28	1:19

OGDEN, UTAH

41°07'N - 111°58'W

HILL AFB (KHIF)

Amdt 9 05OCT23

HI-ILS or LOC Y RWY 14

SW-4, 11 JUN 2026 to 09 JUL 2026

SW-4, 11 JUN 2026 to 09 JUL 2026