

OGDEN, UTAH

HI-TACAN RWY 32

TACAN HIF Chan 49	APCH CRS 332°	Rwy ldg TDZE Arprt Elev	13,500 4783 4789
----------------------	------------------	-------------------------------	------------------------

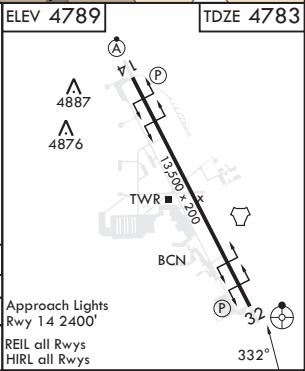
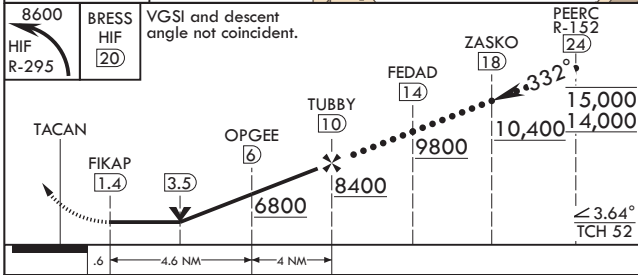
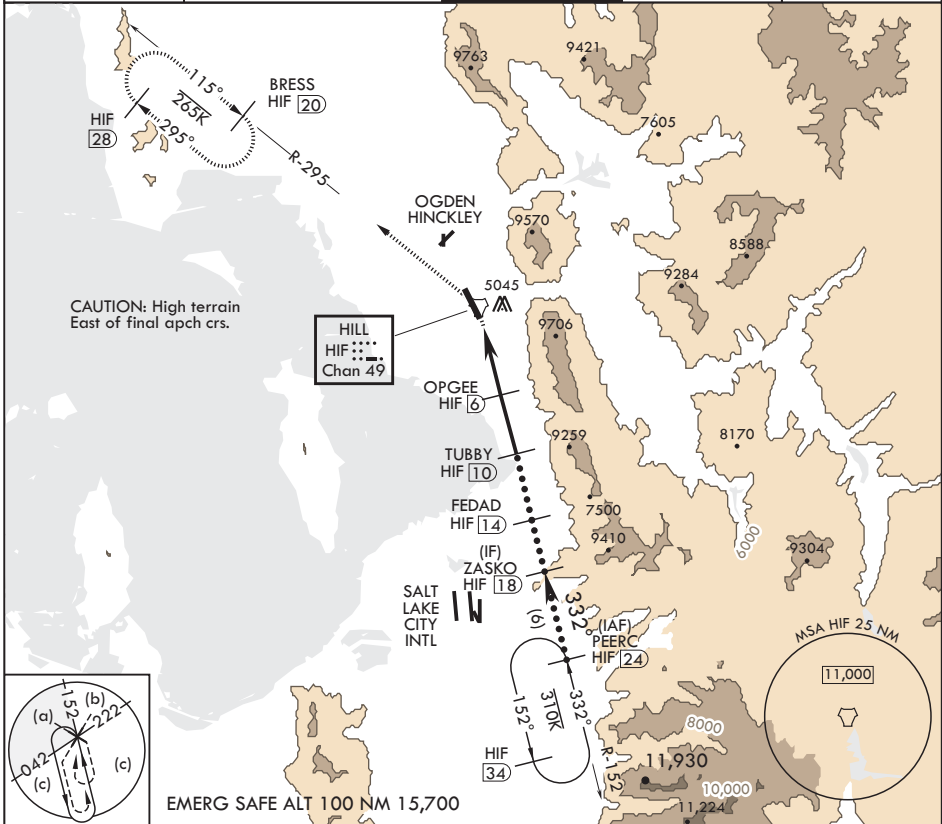
AL-296 (USAF)

HILL AFB (KHIF)

V * When ALS inop, increase CAT CDE vis to 2 1/2 miles.
** Circling not authorized in sector NE of Rwy 14-32.

ODALS MISSED APPROACH: Climbing left turn to 8600 out HIF TACAN R-295 to BRESS and hold.

ATIS 134.925 397.9	SALT LAKE CITY APP CON 121.1 319.25	TOWER 127.15 263.15	GND CON 121.6 275.8	CLNC DEL 124.1 335.8
-----------------------	--	------------------------	------------------------	-------------------------



CATEGORY	C	D	E
S-32*	5560-2	777	(800-2)
C CIRCLING**	5560-2½ 771	(800-2½)	5860-3 1071 (1100-3)

OGDEN, UTAH

41°07'N - 111°58'W

HILL AFB (KHIF)

Amdt 6 05OCT23

HI-TACAN RWY 32

SW-4, 11 JUN 2026 to 09 JUL 2026

SW-4, 11 JUN 2026 to 09 JUL 2026