

LGTING 1 DP (LGTING1.LGTING)

HILL AFB (KHIF)

[USAF]

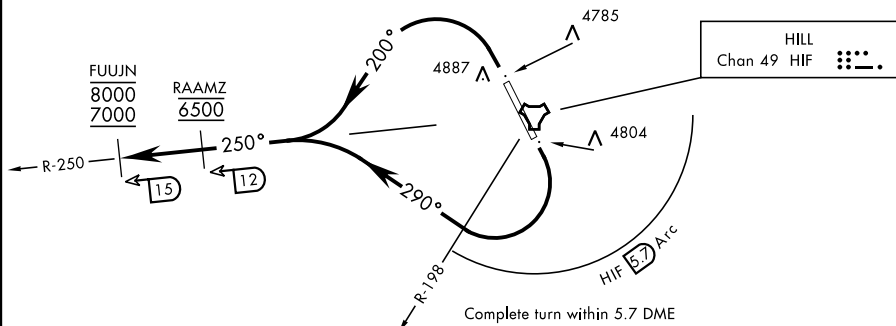
OGDEN, UTAH

ATIS 134.925 397.9
 TOWER
 127.15 263.15
 SALT LAKE CITY
 DEP CON
 121.1 319.25
 CLOVER CON
 134.1 285.65

Rwy	Knots	60	120	180	240	300	360
14	V/V(fpm)	2095	4190	6285	8380	10475	12570
32	V/V(fpm)	4610	9220	13830	18440	23050	27660

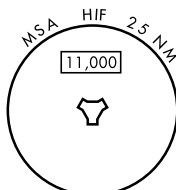
ATC Climb Rate to 5200

Airspeed in excess of 350 KIAS not authorized until established:
 Rwy 14 heading 290°
 Rwy 32 heading 200°



FOR STEREO FLIGHT PLAN USE ONLY

EMERG SAFE ALT 100 NM 15,700



DEPARTURE ROUTE DESCRIPTION

TAKEOFF RWY 14: Turn right heading 290°, remain within HIF TACAN 5.7 DME until passing the HIF R-198 and established on a heading greater than 256°, intercept HIF R-250 outbound prior to HIF 12 DME, cross RAAMZ at 6500, climb and maintain 7000 block 8000.

TAKEOFF RWY 32: Turn left heading 200°, intercept HIF TACAN R-250 outbound prior to HIF 12 DME, cross RAAMZ at 6500, climb and maintain 7000 block 8000.

SW-4, 11 JUN 2026 to 09 JUL 2026

SW-4, 11 JUN 2026 to 09 JUL 2026