

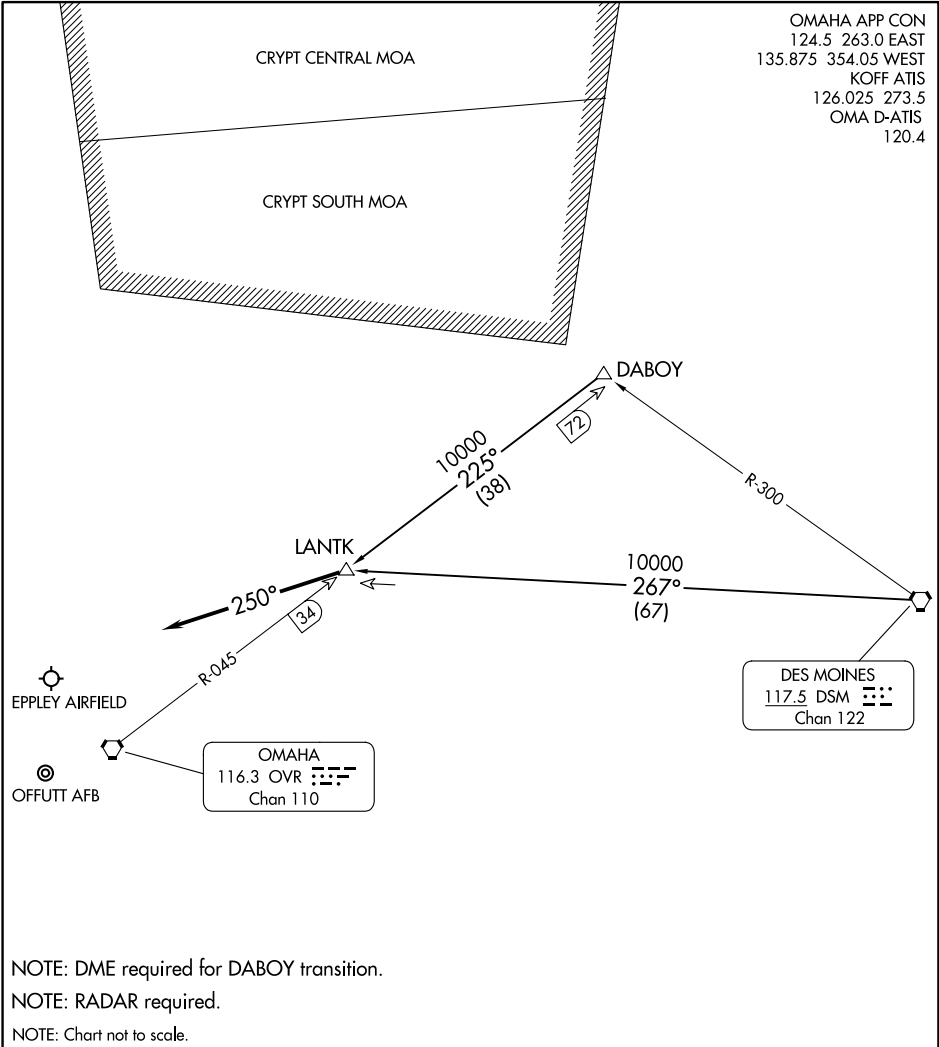
(LANTK.LANTK2) 24361

LANTK TWO ARRIVAL

AL-304 (FAA)

OMAHA, NEBRASKA

OMAHA APP CON
 124.5 263.0 EAST
 135.875 354.05 WEST
 KOFF ATIS
 126.025 273.5
 OMA D-ATIS
 120.4



NC-2, 11 JUN 2026 to 09 JUL 2026

NC-2, 11 JUN 2026 to 09 JUL 2026

NOTE: DME required for DABOY transition.

NOTE: RADAR required.

NOTE: Chart not to scale.

ARRIVAL ROUTE DESCRIPTION

DABOY TRANSITION (DABOY.LANTK2): From over DABOY on OVR R-045 to LANTK. Thence. . .

DES MOINES TRANSITION (DSM.LANTK2): From over DSM VORTAC on DSM R-267 to LANTK. Thence. . .

. . . From over LANTK fly heading 250° and expect RADAR vectors to final approach course.

LANTK TWO ARRIVAL

(LANTK.LANTK2) 08SEP22

OMAHA, NEBRASKA