

APP CRS <b>322°</b>	Rwy Ldg TDZE Apt Elev	<b>9502</b> <b>981</b> <b>985</b>
------------------------	-----------------------------	---

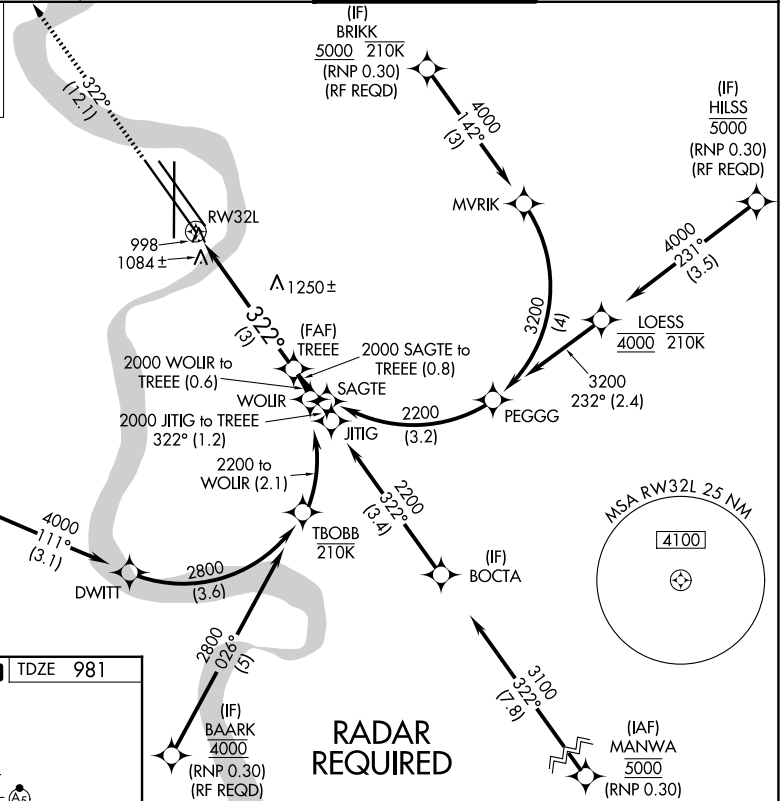
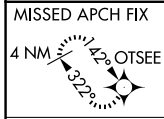
# RNAV (RNP) Z RWY 32L

EPPLEY AIRFIELD (OMA)

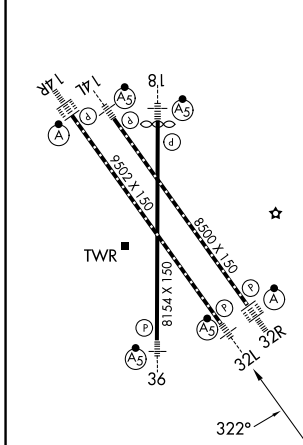
**⚠** For uncompensated Baro-VNAV systems, procedure NA below -19°C (-2°F) or above 54°C (130°F). When VGSI inop, procedure NA at night.  
For inoperative ALS, increase RNP 0.15 all Cats visibility to 1¼ SM and RNP 0.30 all Cats visibility to 2¼ SM. GPS required.

**MALSR** MISSED APPROACH: Climb to 3300 on track 322° to OTSEE and hold.

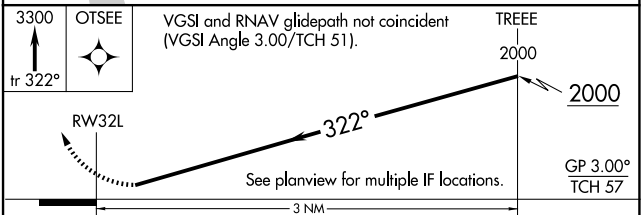
D-ATIS <b>120.4</b>	OMAHA APP CON <b>135.875 354.05</b>	OMAHA TOWER <b>132.1 256.9</b>	GND CON <b>121.9</b>
------------------------	--	-----------------------------------	-------------------------



ELEV 985	<b>D</b>	TDZE 981
----------	----------	----------



HIRL all Rwys  
TDZ/CL Rwys 14R and 32R



CATEGORY	A	B	C	D
RNP 0.15 DA		1359/50	378 (400-1)	
RNP 0.30 DA		1624-1¾	643 (700-1¾)	

## AUTHORIZATION REQUIRED

NC-2, 11 JUN 2026 to 09 JUL 2026

NC-2, 11 JUN 2026 to 09 JUL 2026