

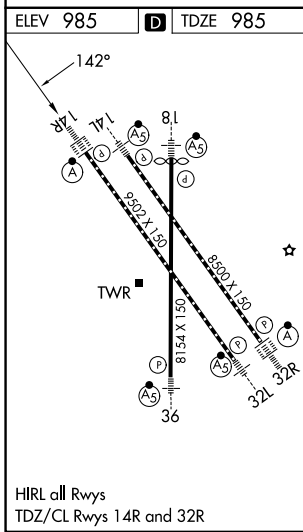
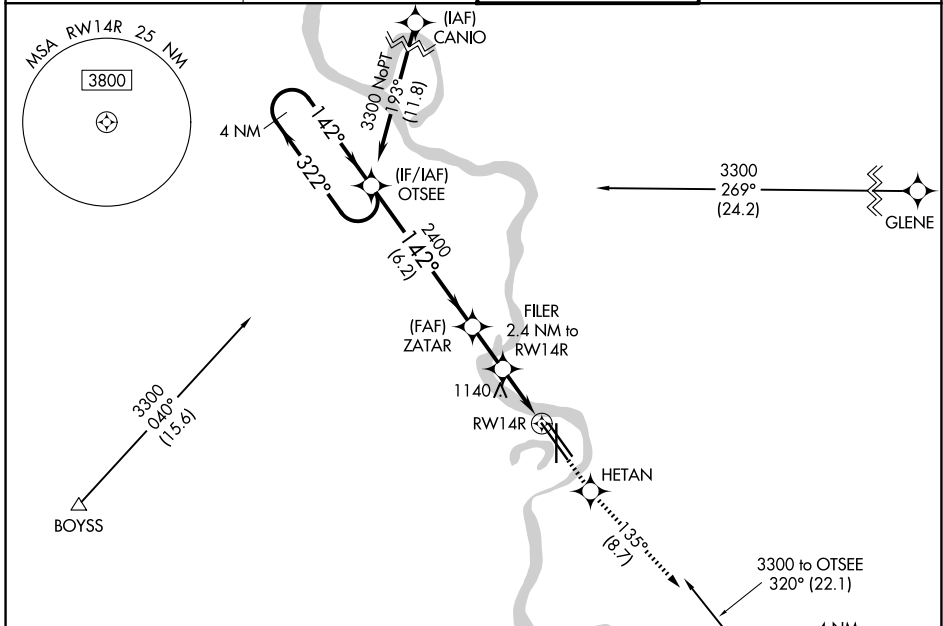
WAAS CH <b>56217</b> <b>W14A</b>	APP CRS <b>142°</b>	Rwy Ldg TDZE Apt Elev	<b>9502</b> <b>985</b> <b>985</b>
--	------------------------	-----------------------------	---

# RNAV (GPS) Y RWY 14R

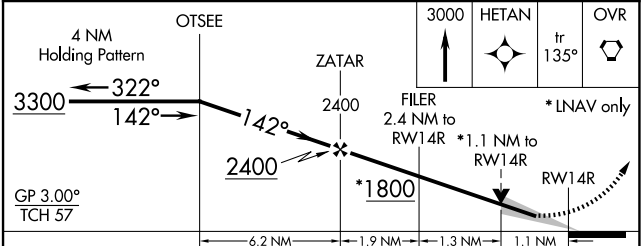
EPPLEY AIRFIELD (OMA)

RNP APCH.	ALSF-2 	MISSED APPROACH: Climb to 3000 direct HETAN and on track 135° to OVR VORTAC and hold.
For uncompensated Baro-VNAV systems, LNAV/VNAV NA below -19°C (-2°F) or above 54°C (130°F). For inop ALS, increase LNAV/VNAV all Cats visibility to 1 3/8 SM.		

D-ATIS <b>120.4</b>	OMAHA APP CON <b>135.875 354.05</b>	OMAHA TOWER <b>132.1 256.9</b>	GND CON <b>121.9</b>
------------------------	--	-----------------------------------	-------------------------



Procedure NA for arrival on OVR VORTAC  
airway radials 245 CW 258 and  
on airway radials 295 CW 312.



CATEGORY	A	B	C	D
LPV DA	1185/18		200 (200-1/2)	
LNAV/VNAV DA	1465/50		480 (500-1)	
LNAV MDA	1380/24	395 (400-1/2)		1380/35 395 (400-3/8)
CIRCLING	1660-1	1680-1	2000-3	2040-3
	675 (700-1)	695 (700-1)	1015 (1100-3)	1055 (1100-3)

NC-2, 11 JUN 2026 to 09 JUL 2026

NC-2, 11 JUN 2026 to 09 JUL 2026